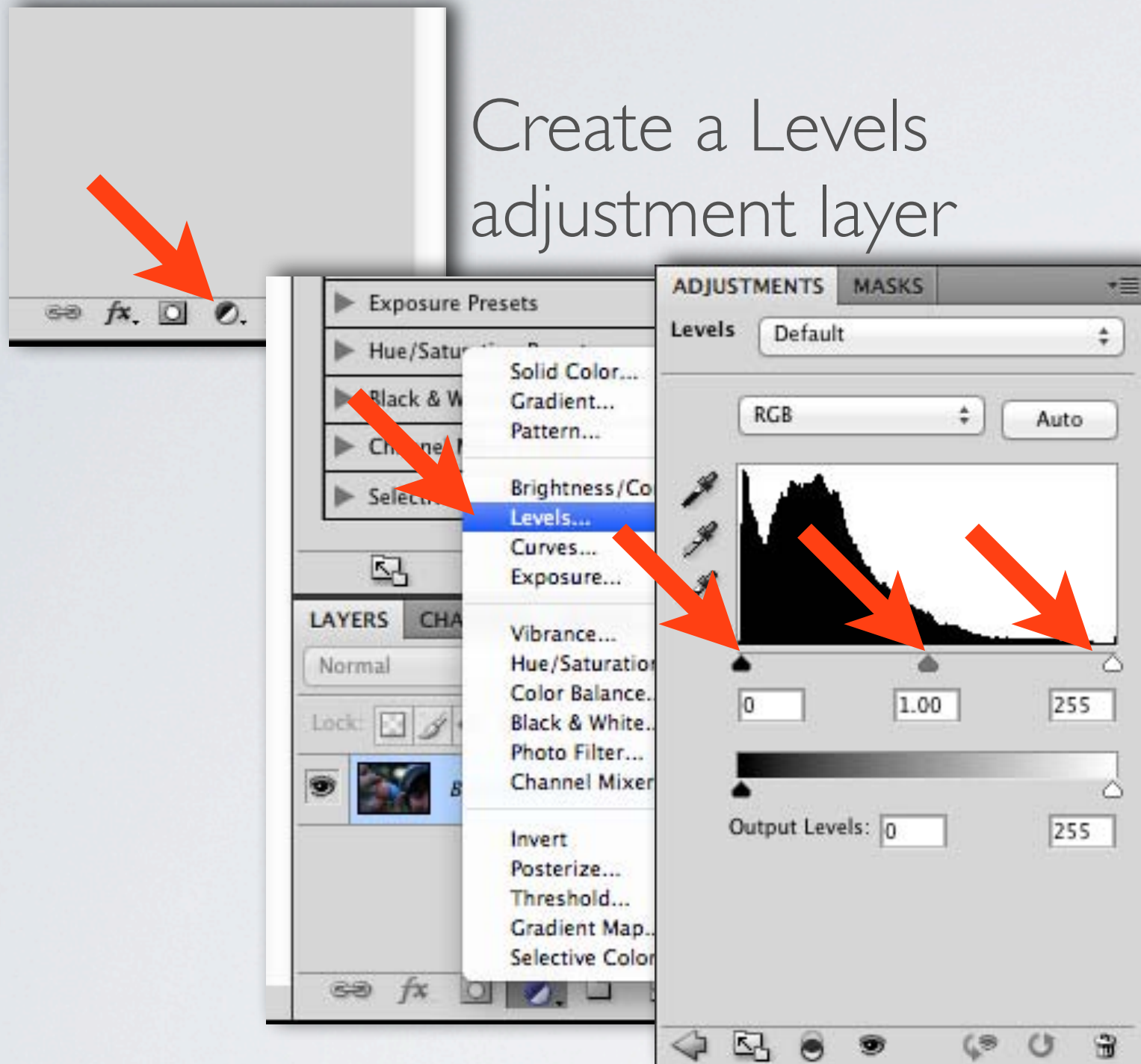


# LEVELS

Create a Levels adjustment layer

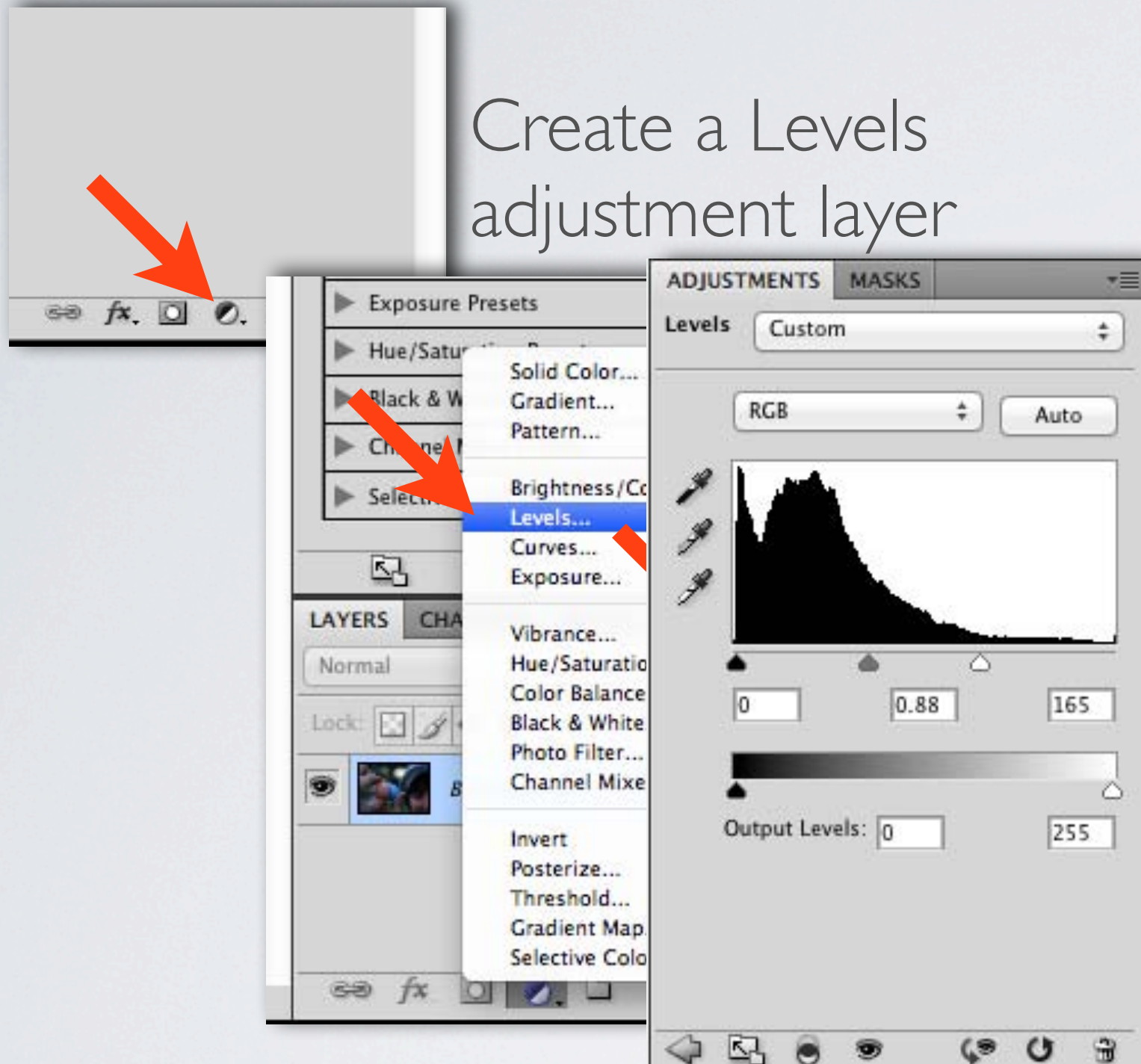


Adjust the white, gray, and black points.



# LEVELS

Create a Levels adjustment layer



Adjust the white, gray, and black points.

# LEVELS



Original

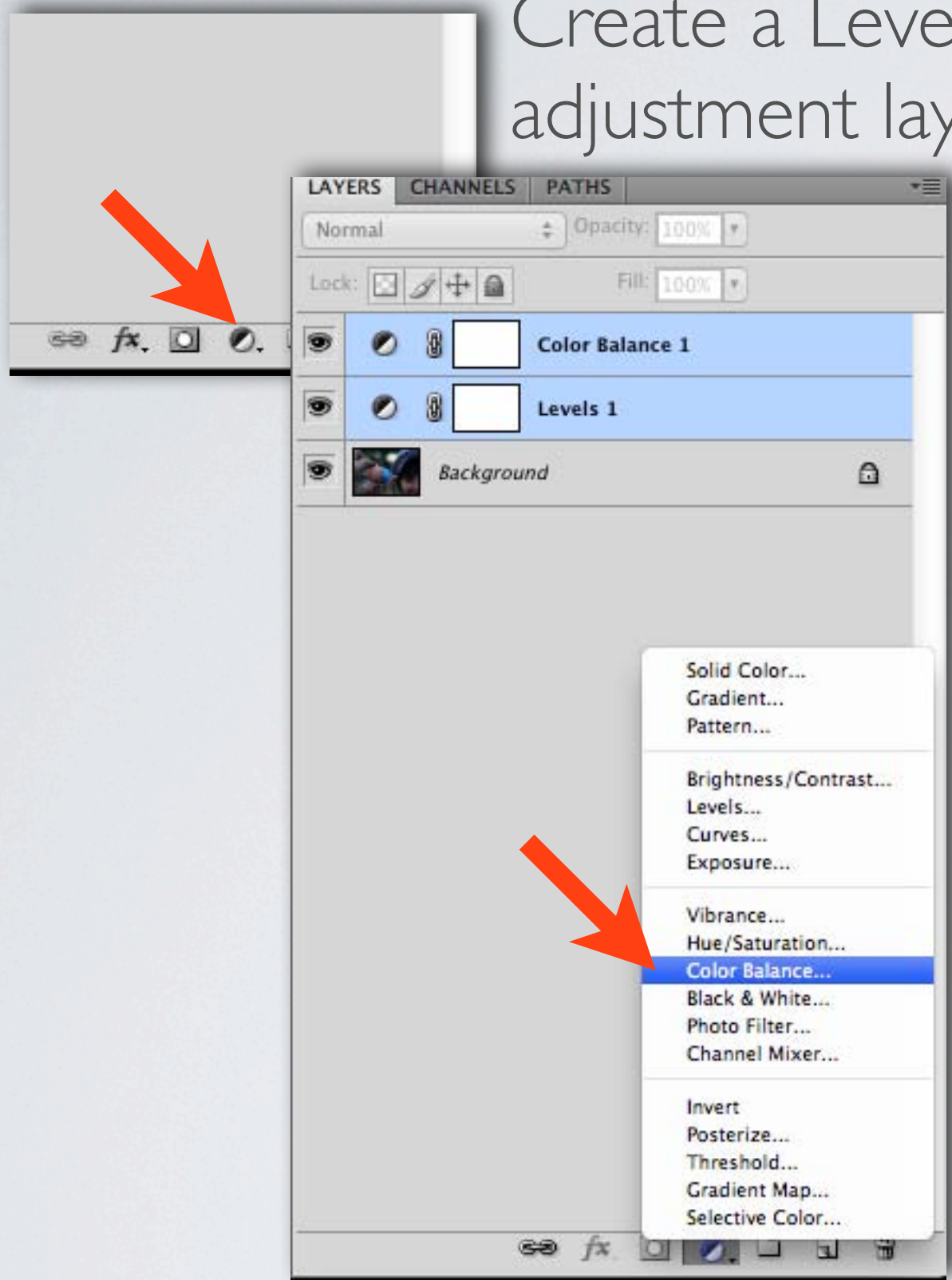
*Not finished...*



Levels

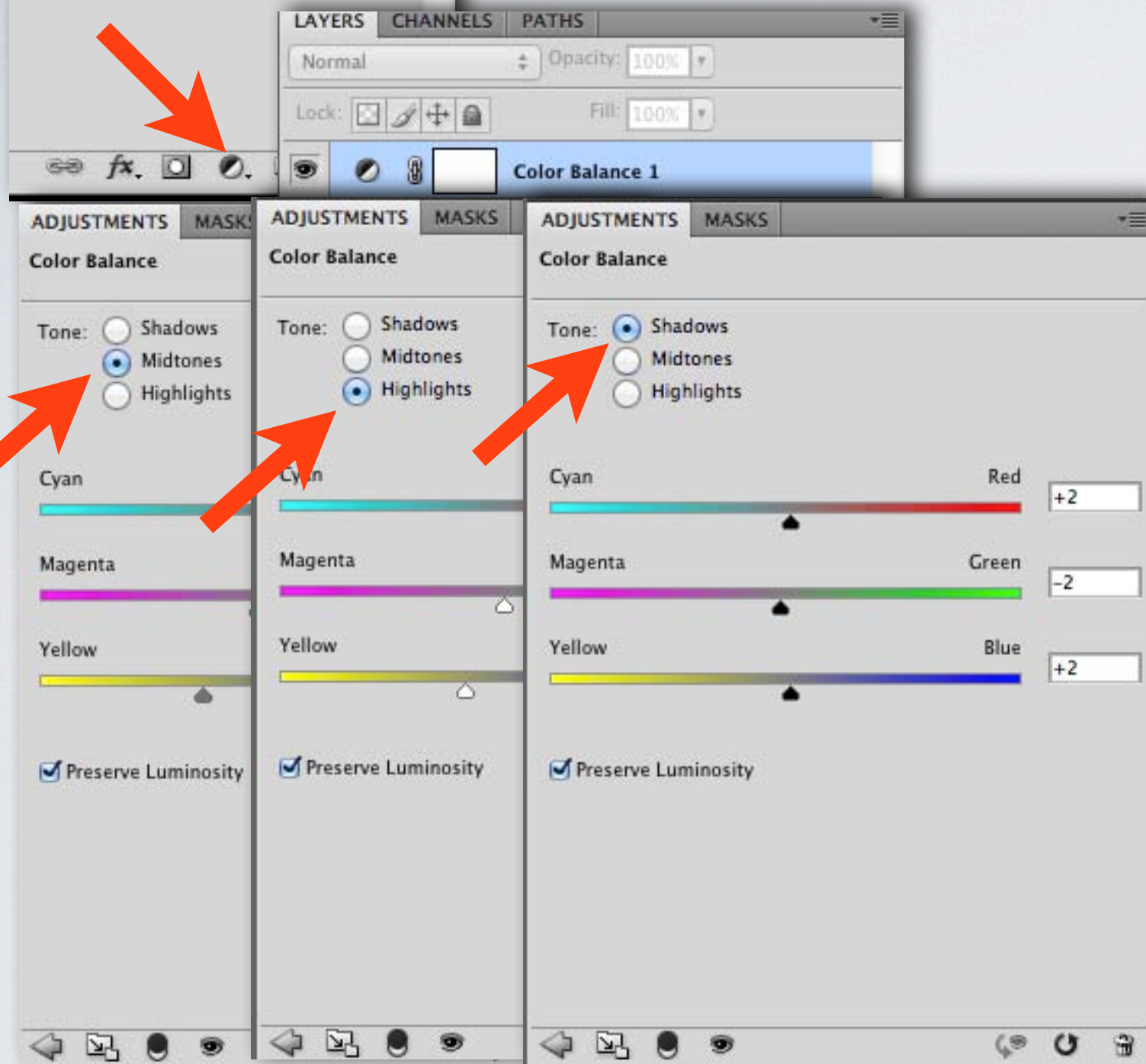
Create a Levels adjustment layer

# COLOR BALANCE



# COLOR BALANCE

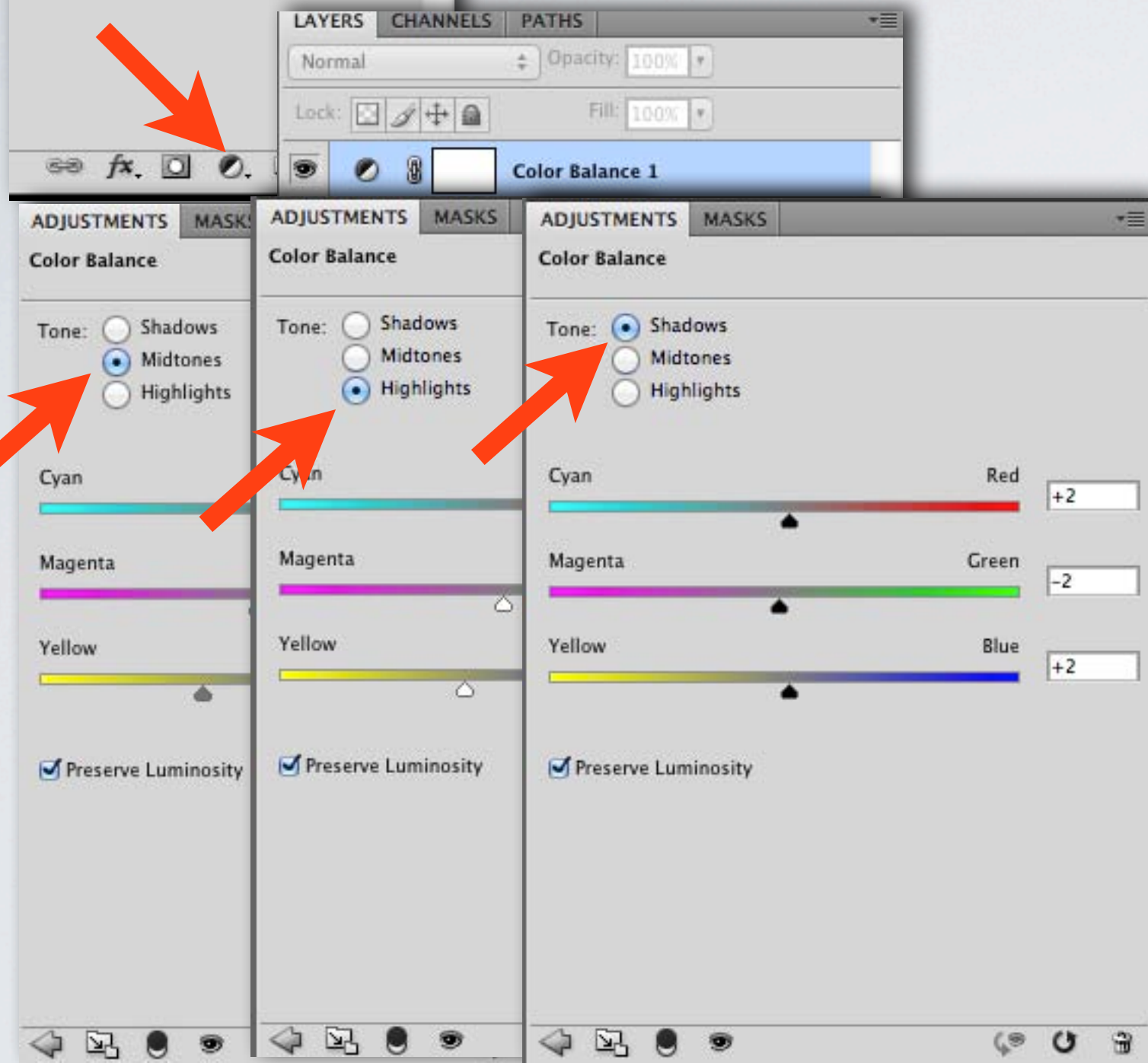
Create a Levels adjustment layer



Adjust Midtones, Highlights, and Shadows separately.  
The goal is to restore the original colors.

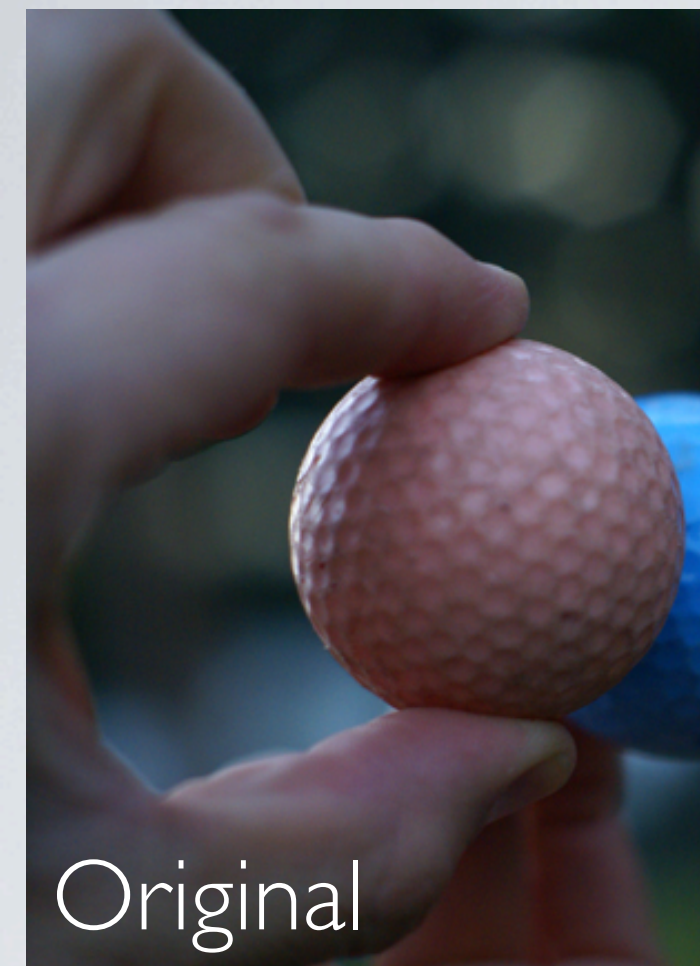
# COLOR BALANCE

Create a Levels adjustment layer



Adjust Midtones, Highlights, and Shadows separately. The goal is to restore the original colors.

# LEVELS & COLOR BALANCE



Original



Levels



Levels & Color Balance