

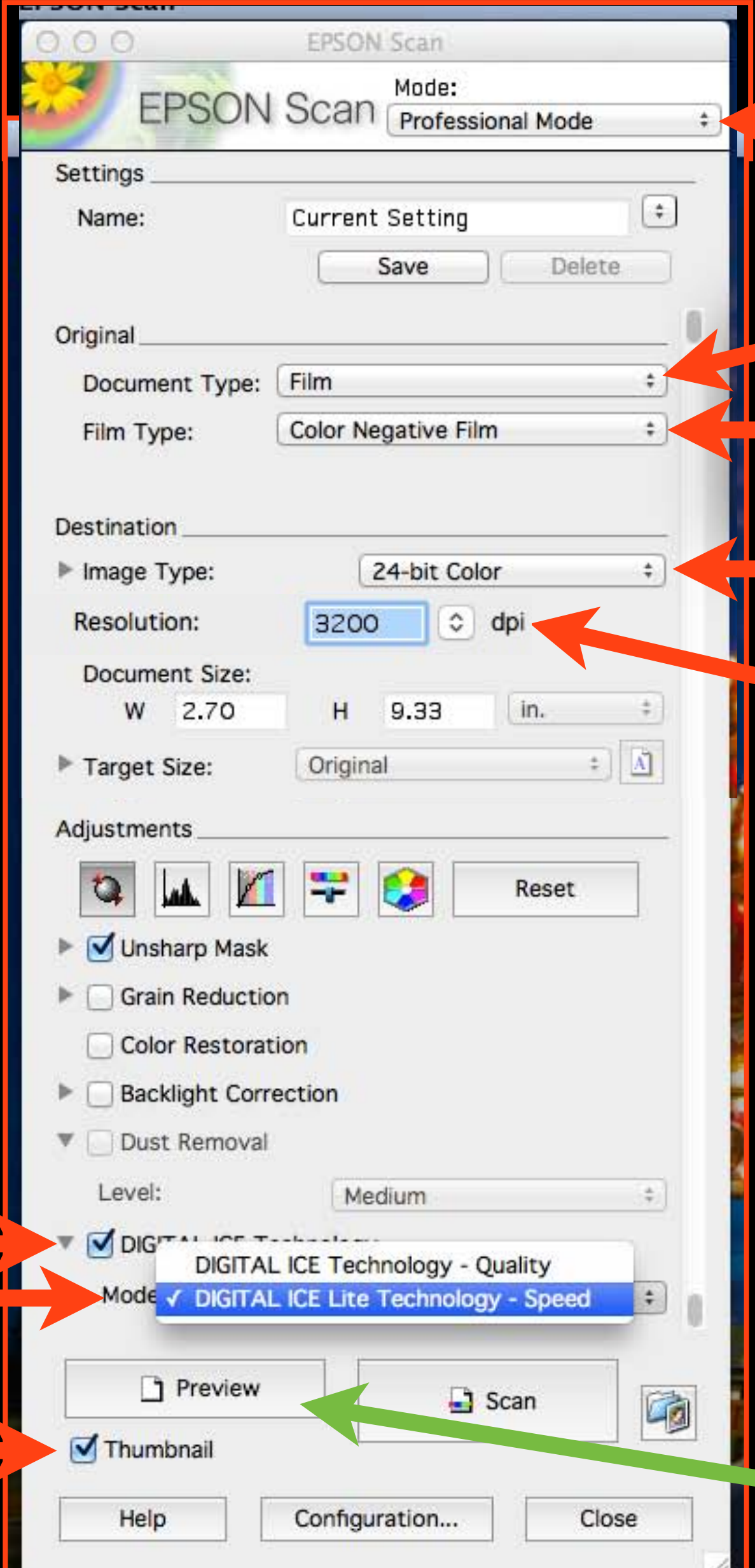
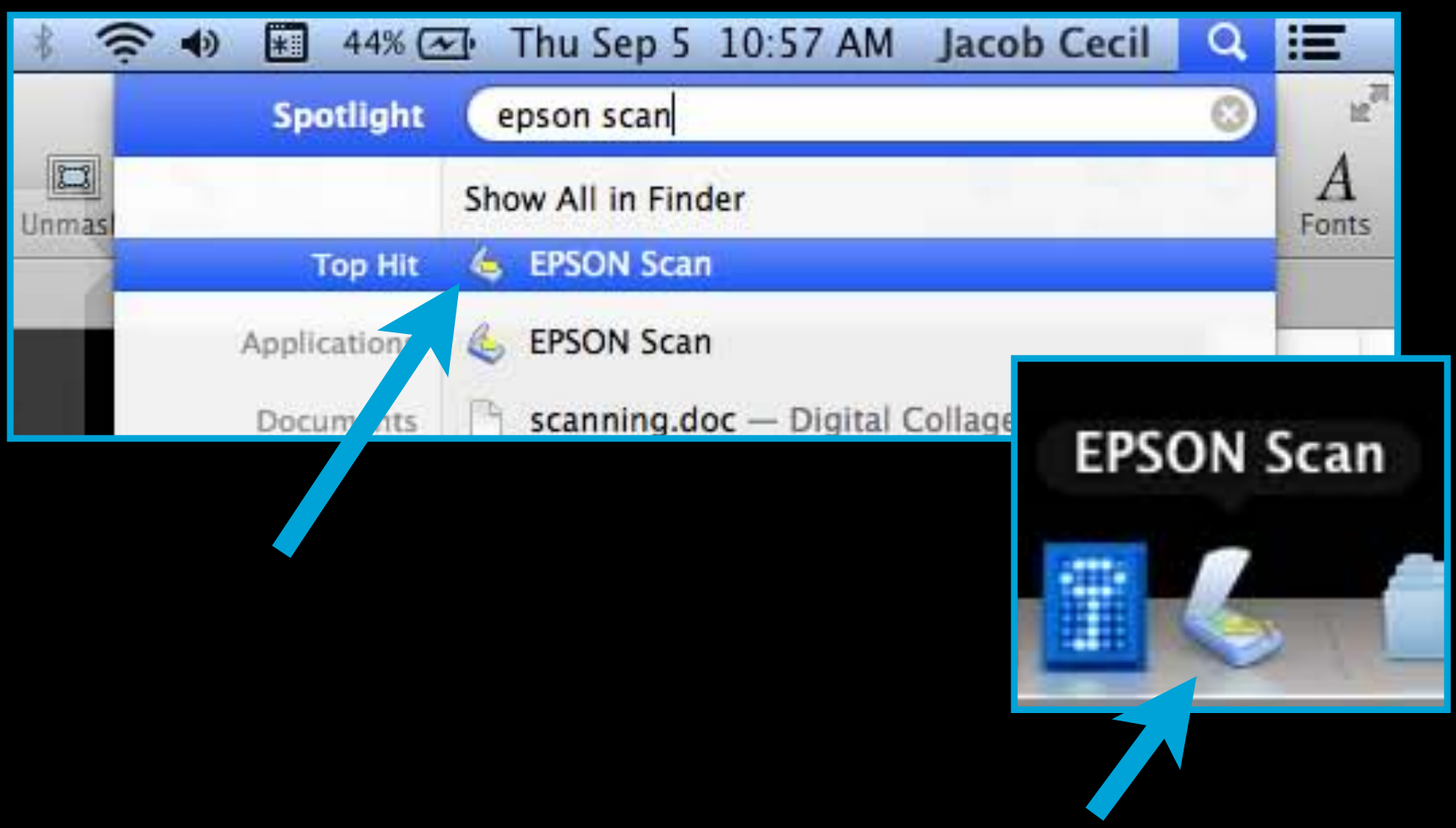
Scanning and Editing

COLOR NEGATIVES

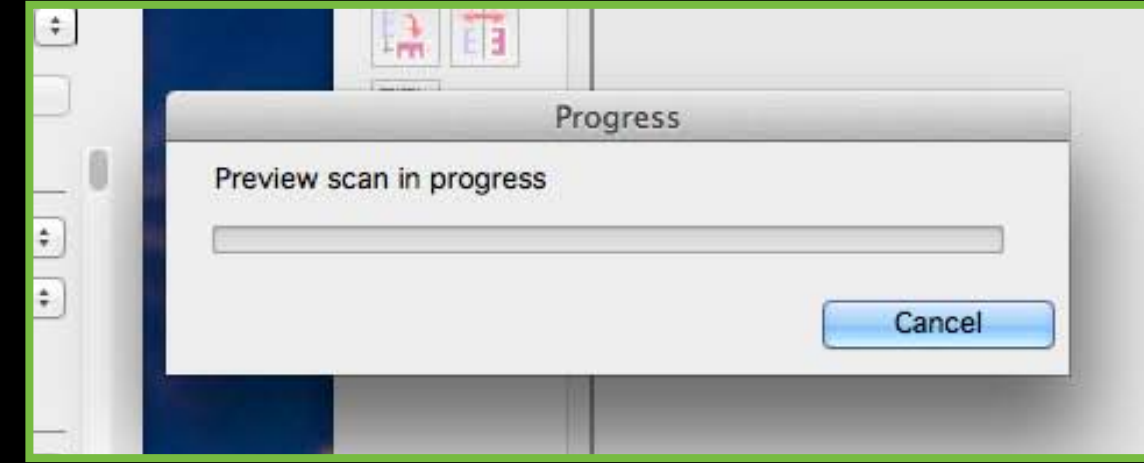
Scanning

2. Adjust Settings to what you see here

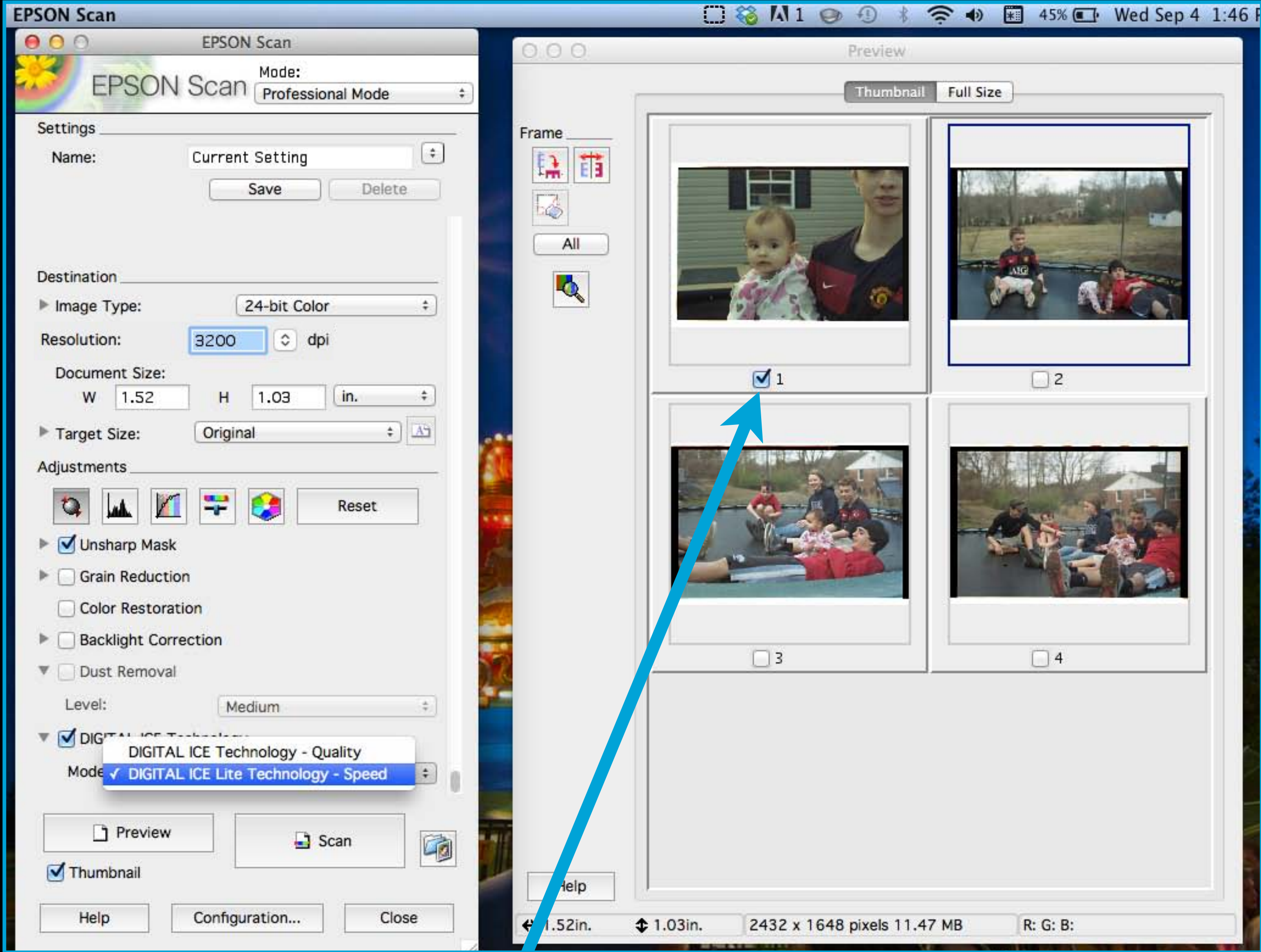
1. Open Epson Scan



Check Digital ICE Technology for dust removal, choose Speed mode

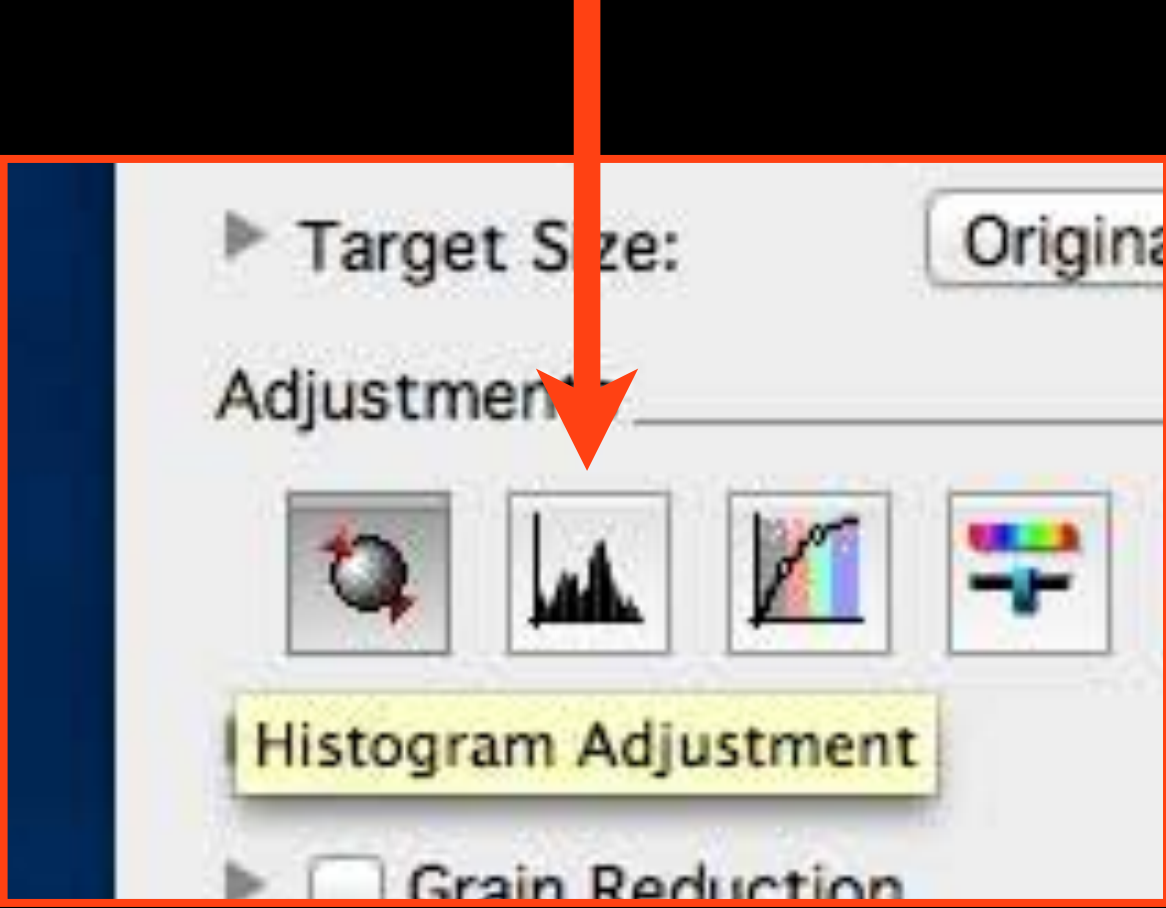


3. Click Preview

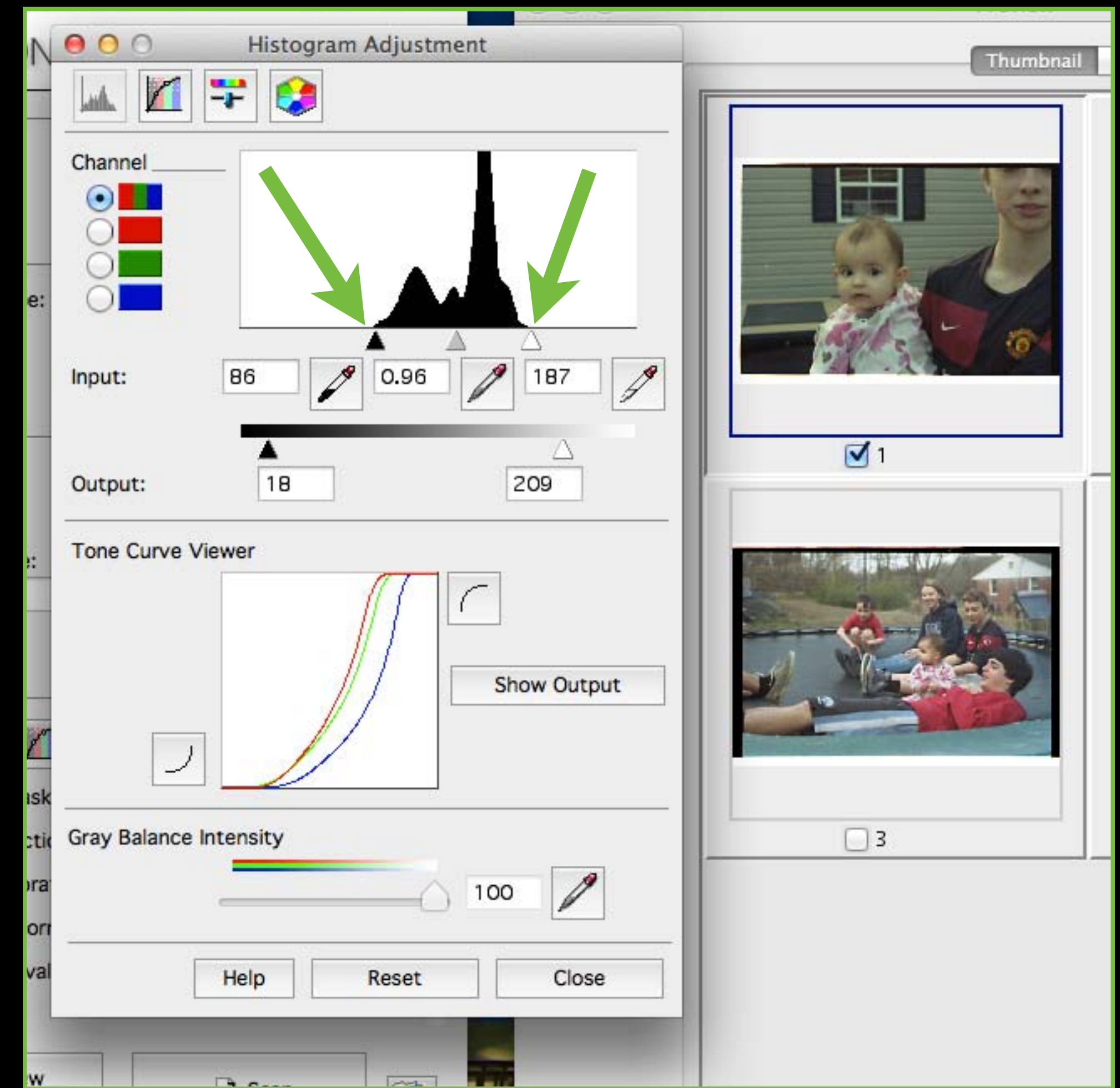
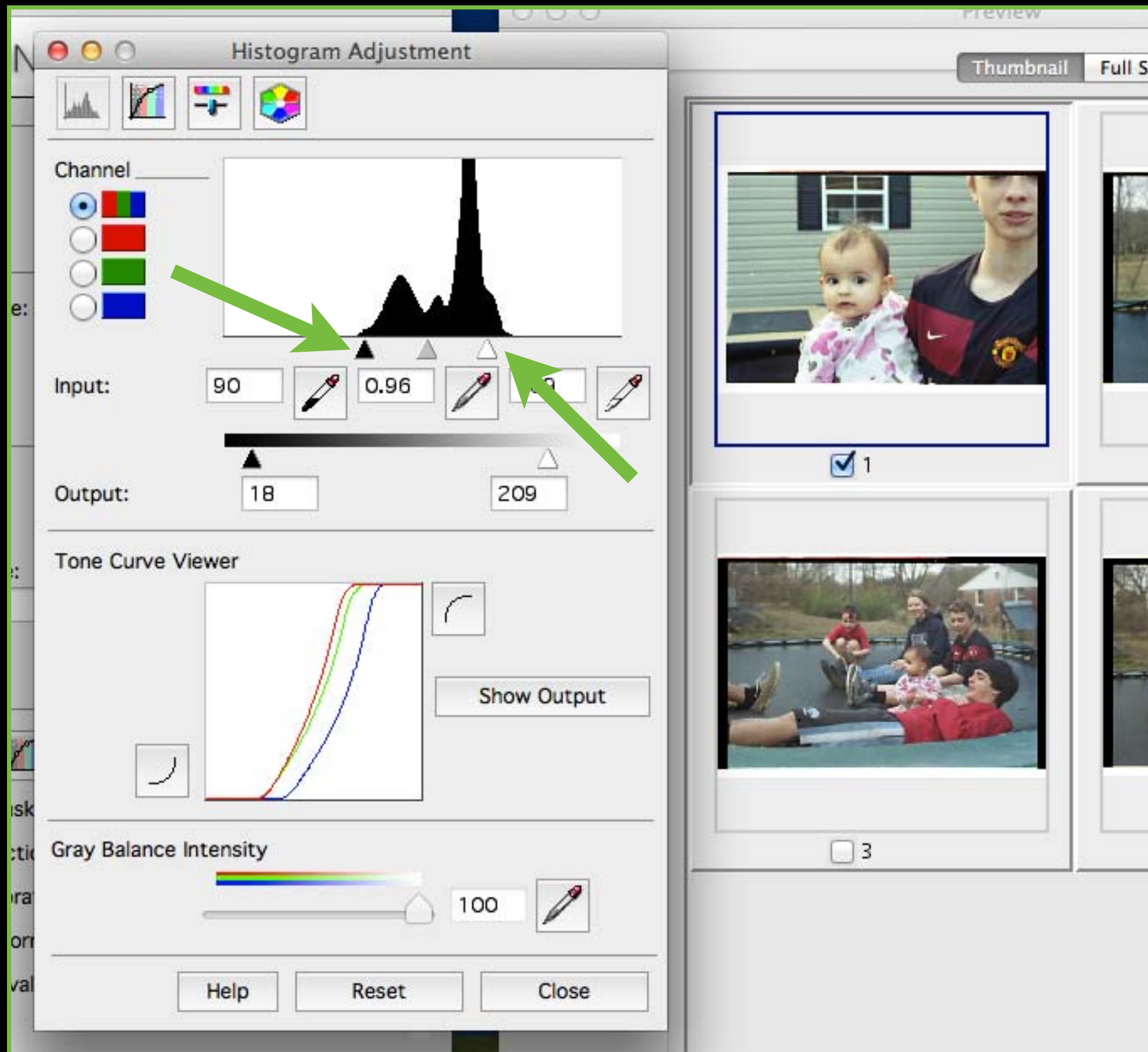


4. Check images you want to scan

5. Click Histogram Adjustment

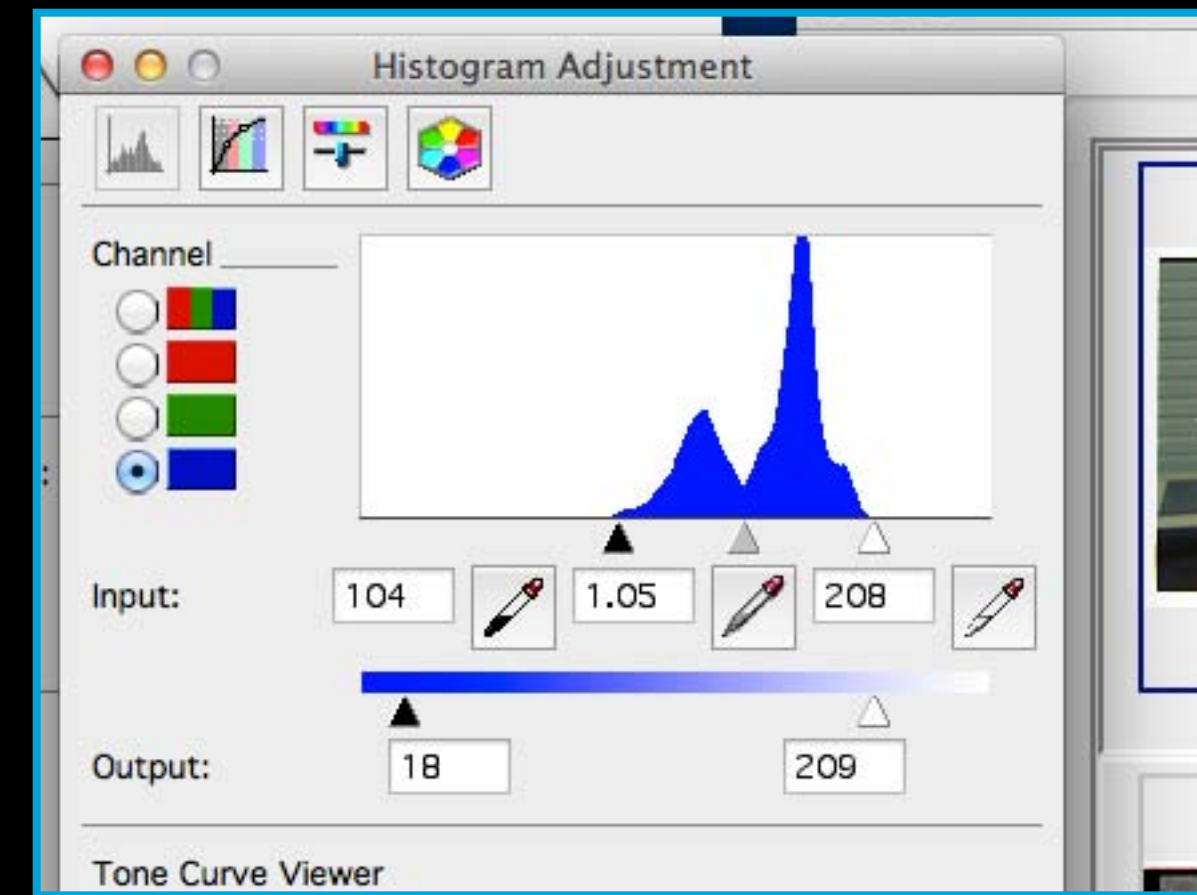
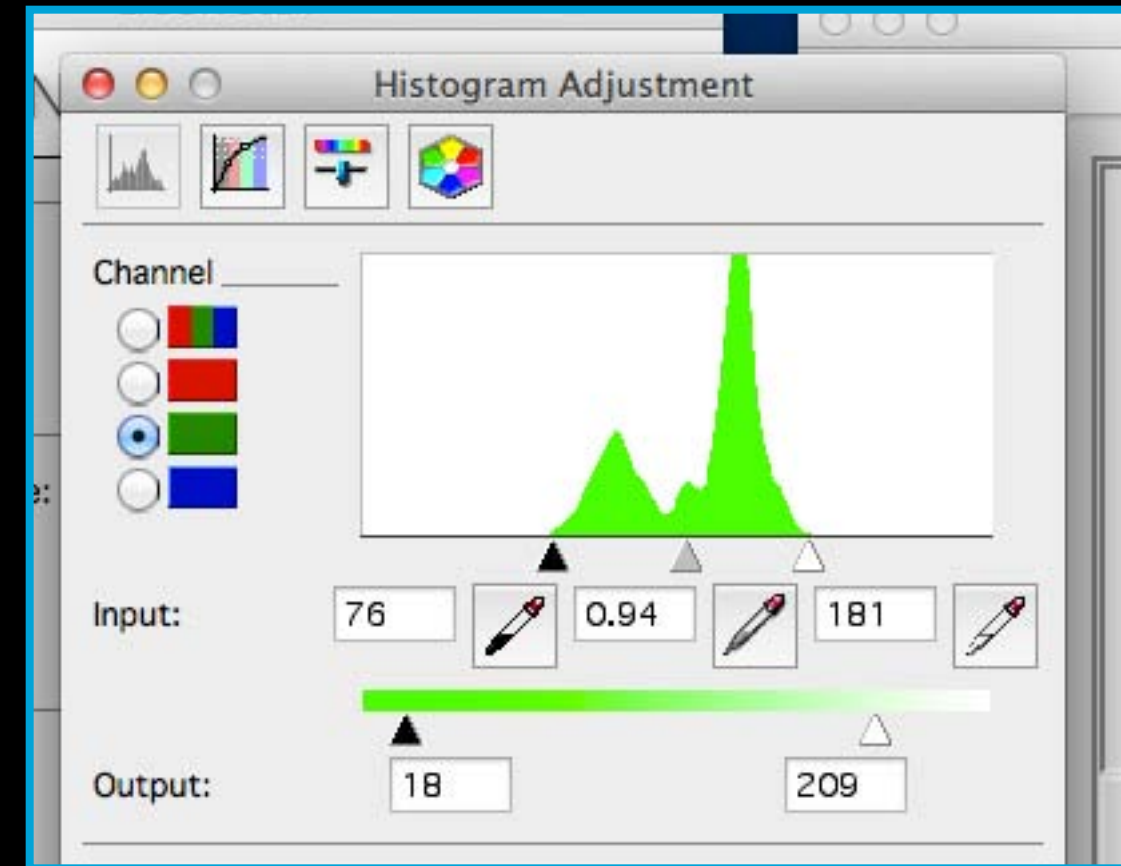
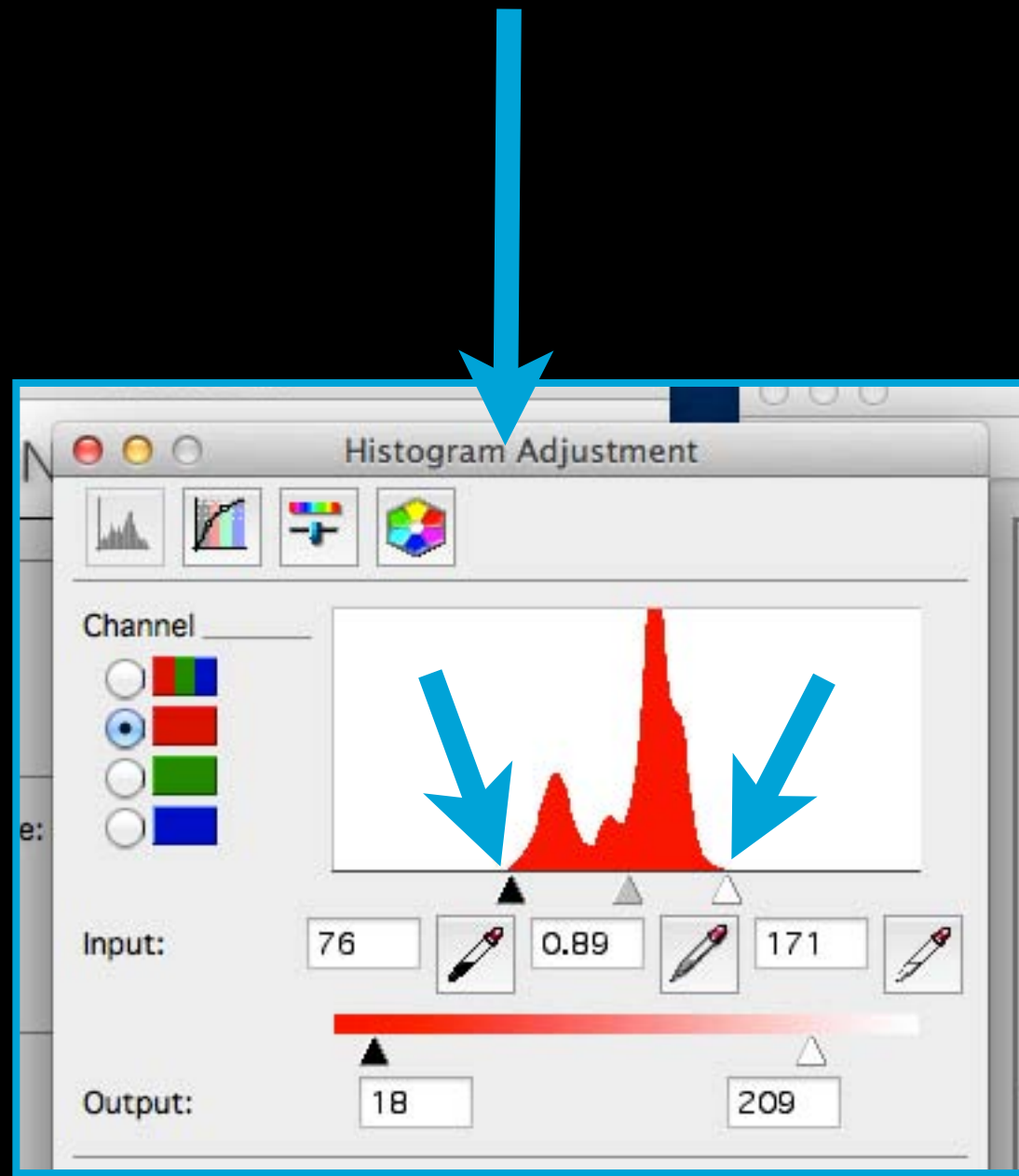


6. Click on each image separately and adjust it by dragging the arrows to the edge of the Histogram, click Close when done

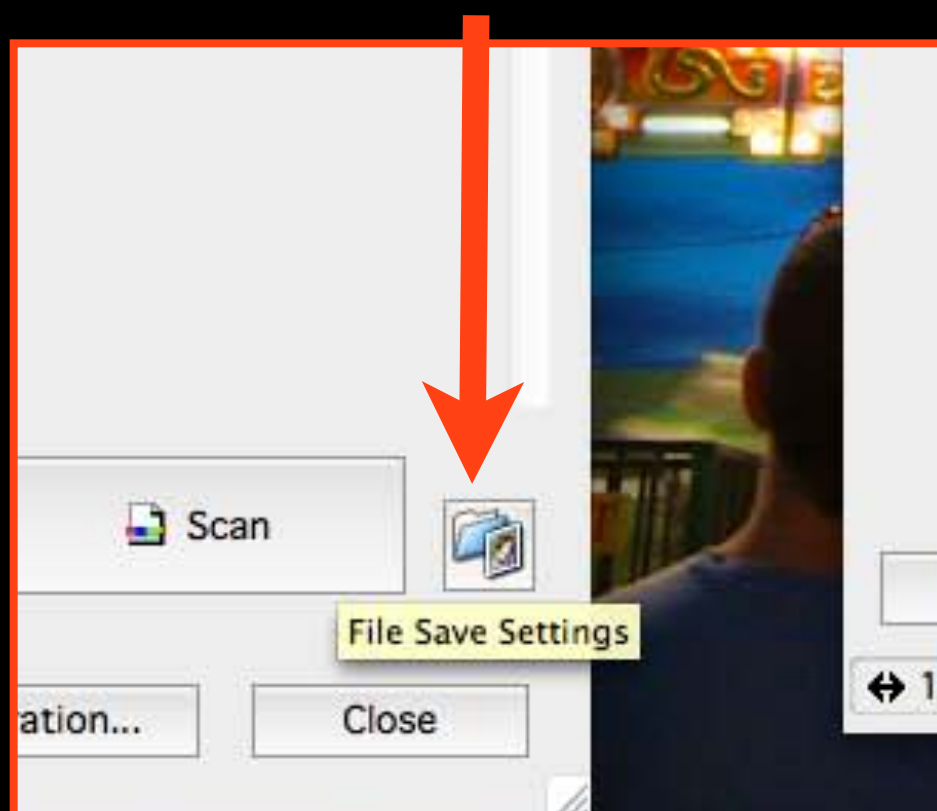


It will look too dark, that's okay - it will be adjusted later

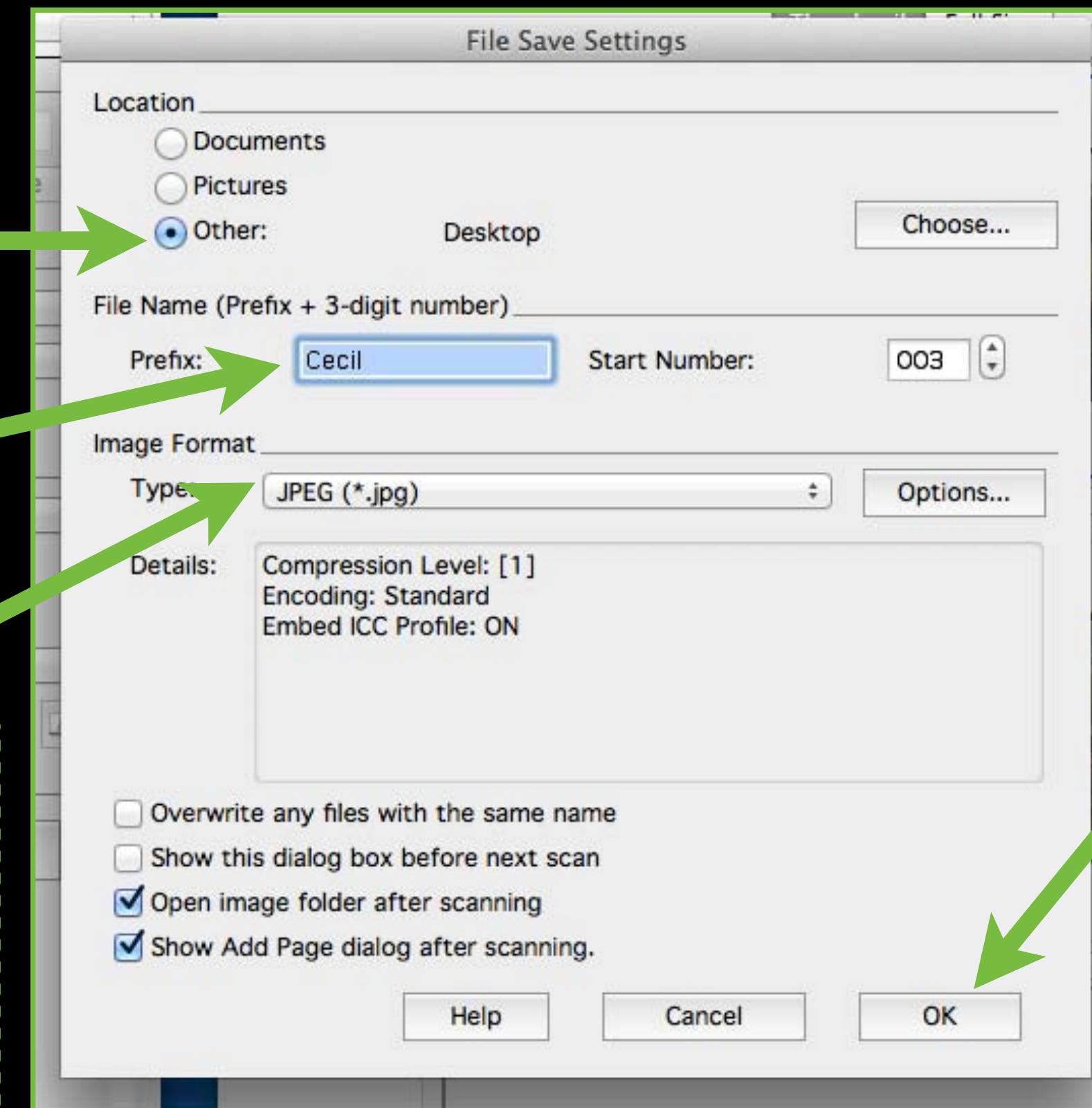
7. Check each color individually



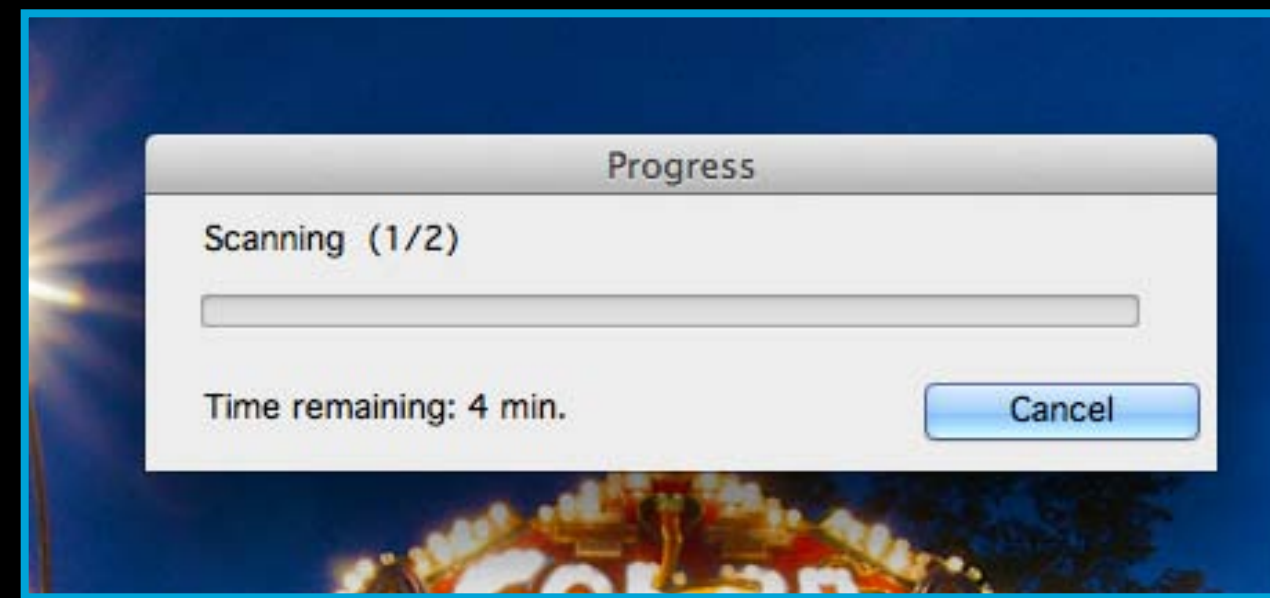
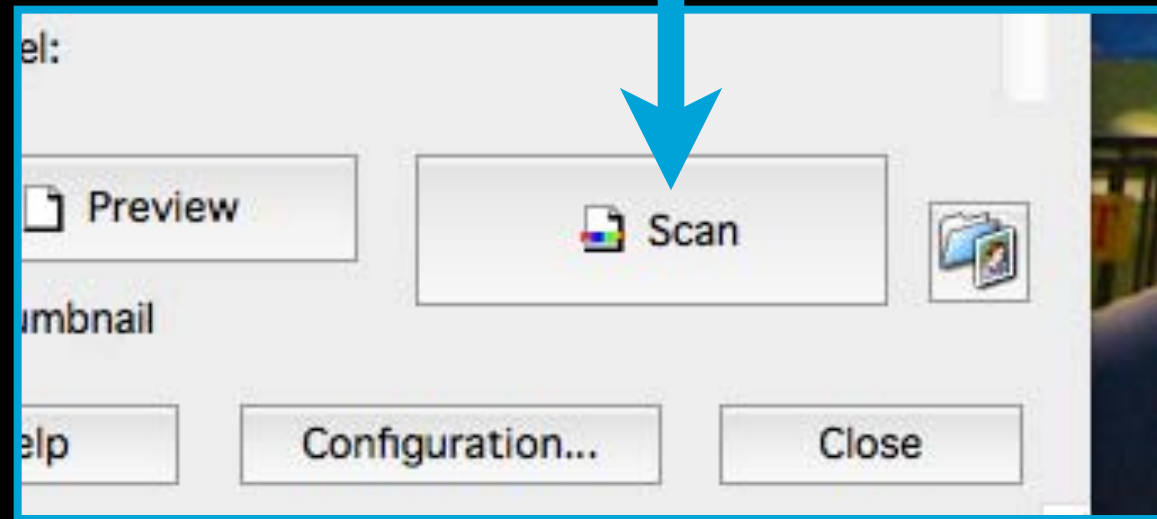
8. Click on File Save Settings



9. Choose Other in order to save to the Desktop, name it and select JPEG



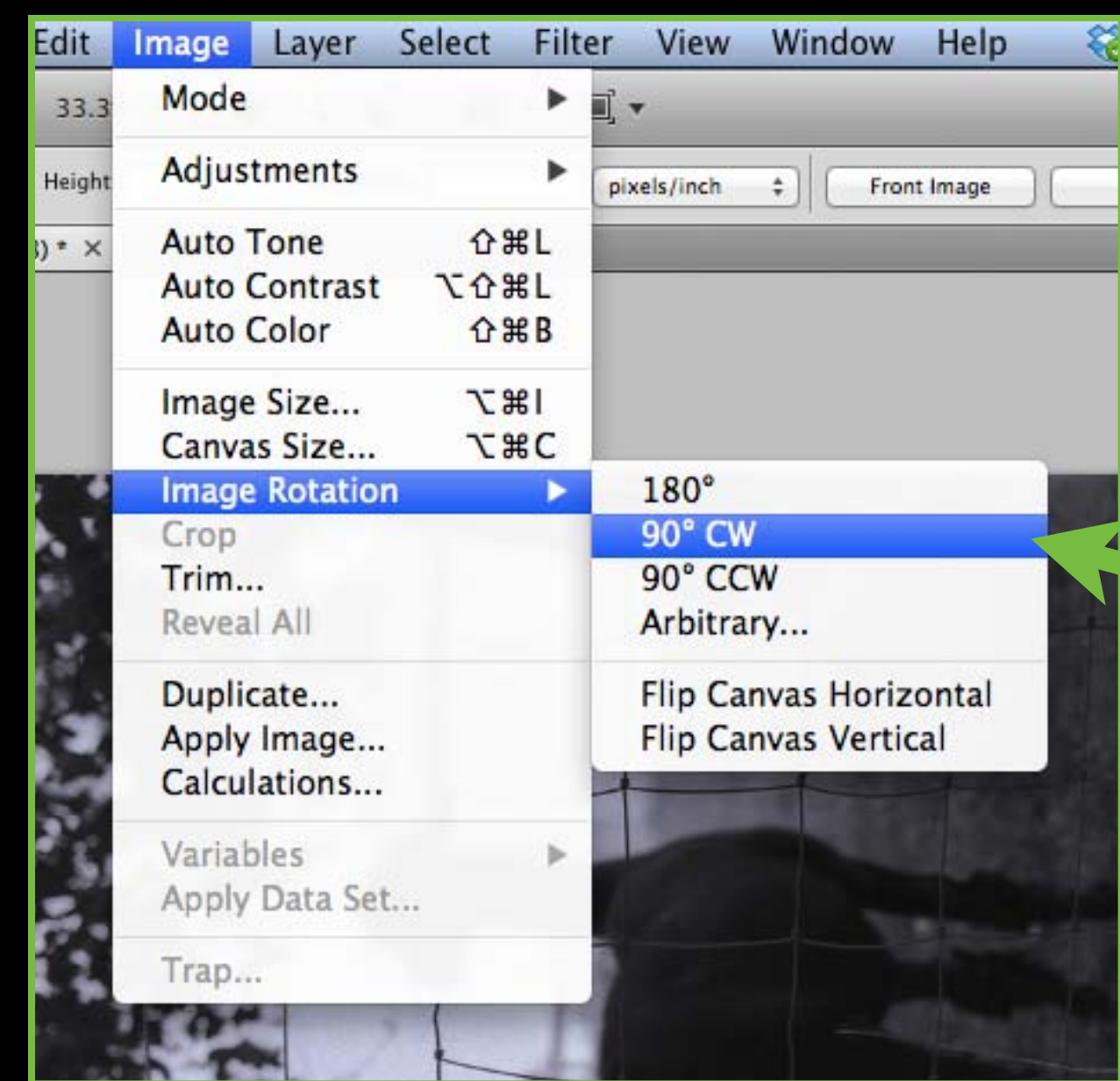
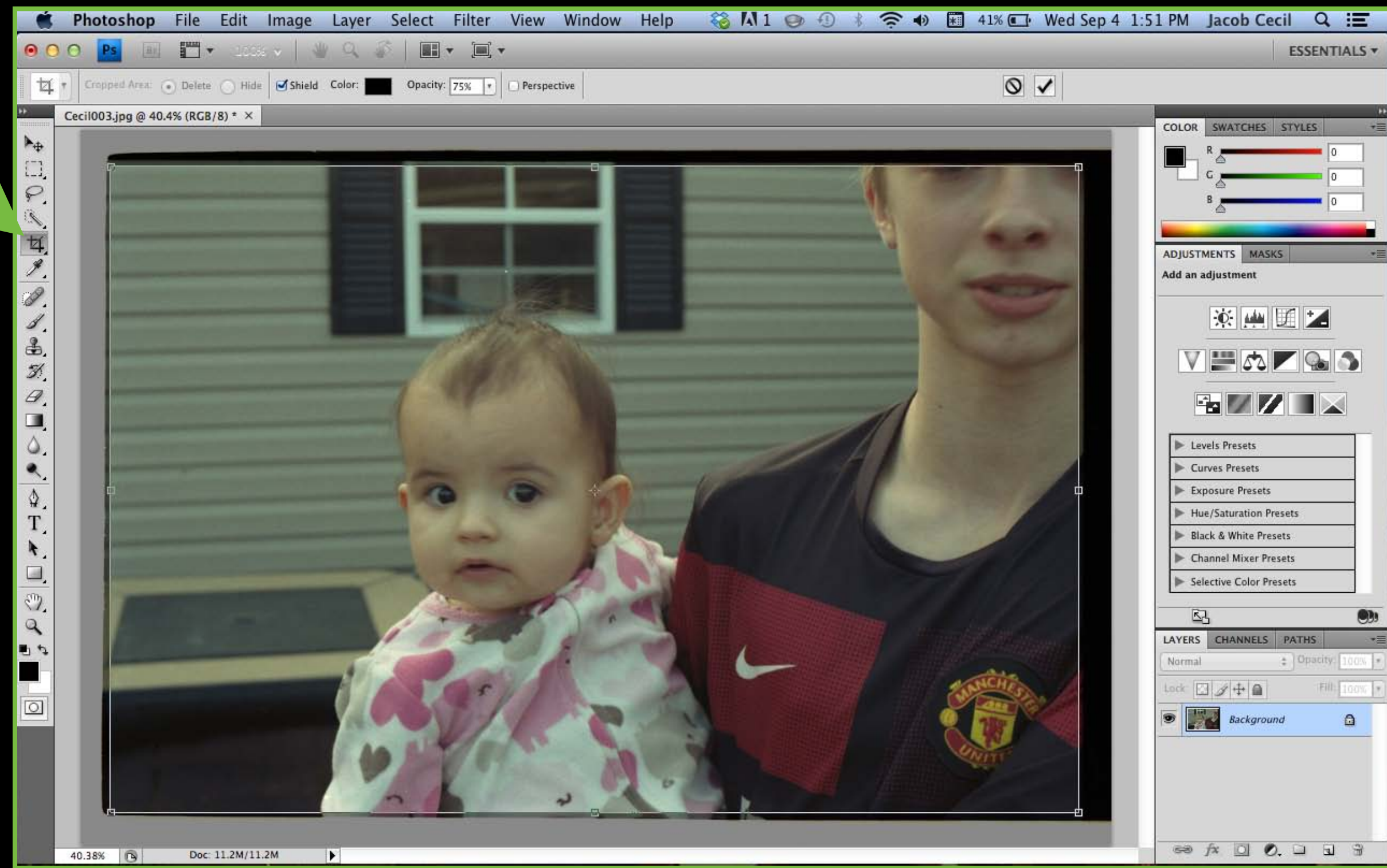
10. Click Scan



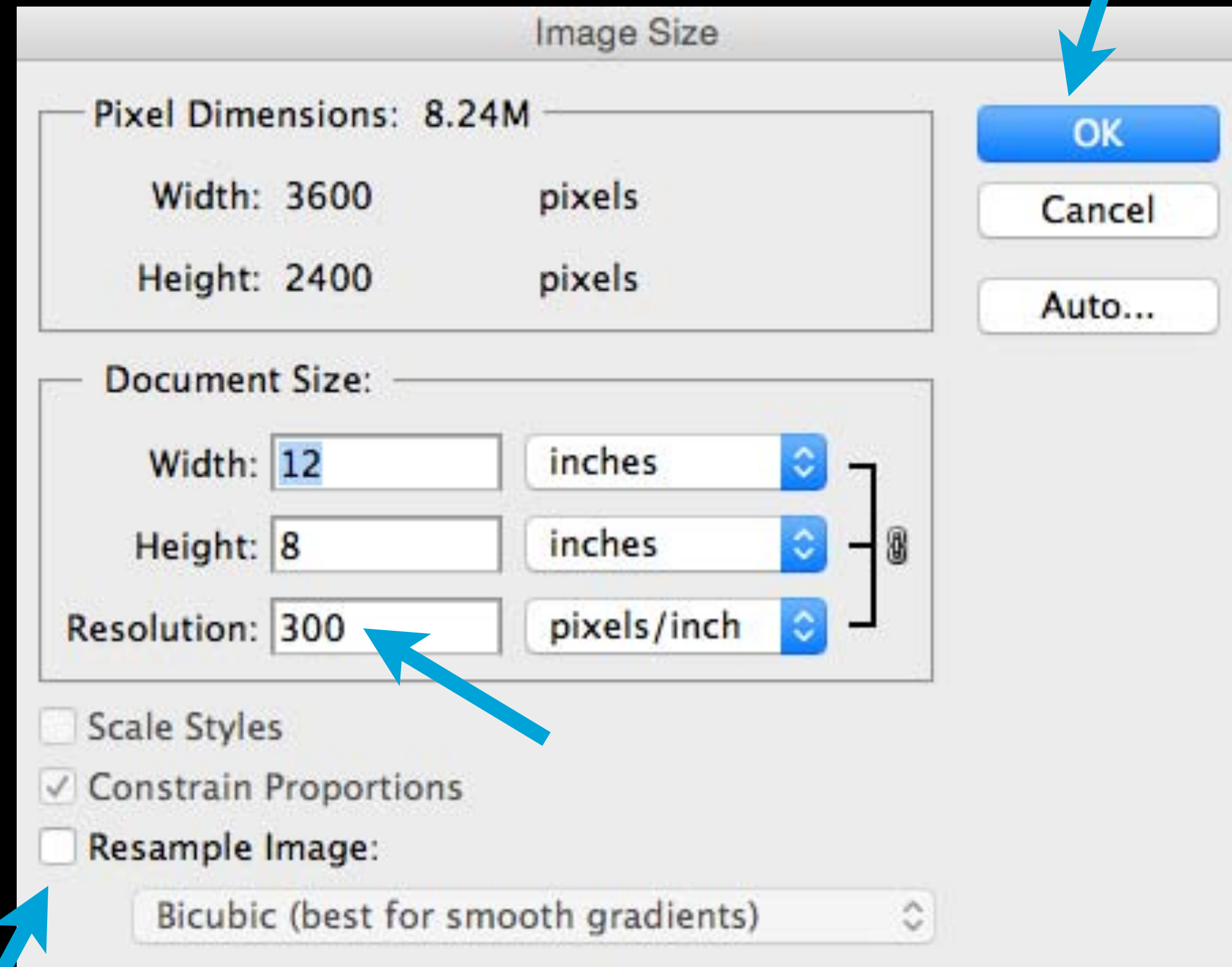
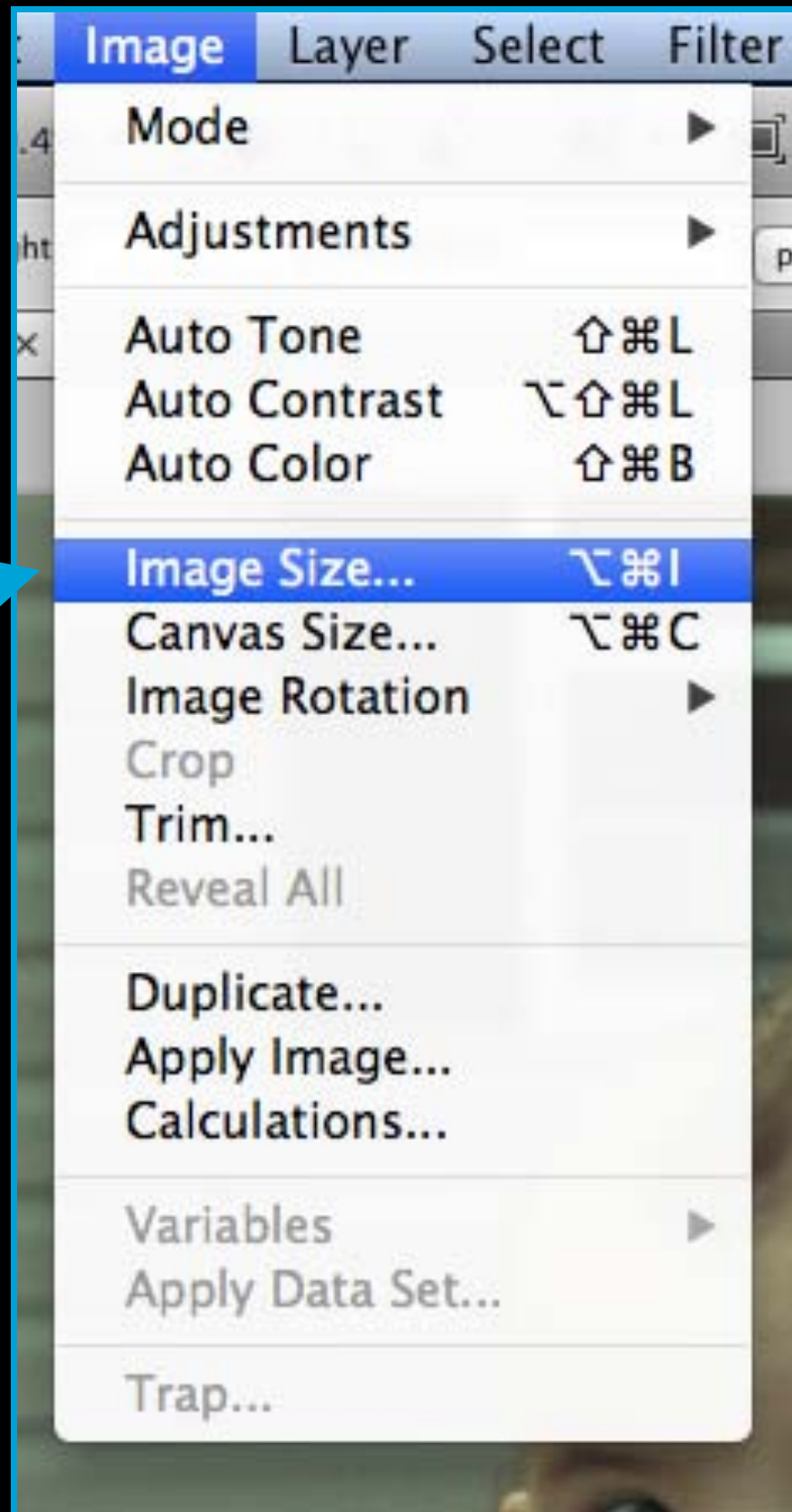
11. Open Photoshop



12. Crop (C) and Rotate if needed

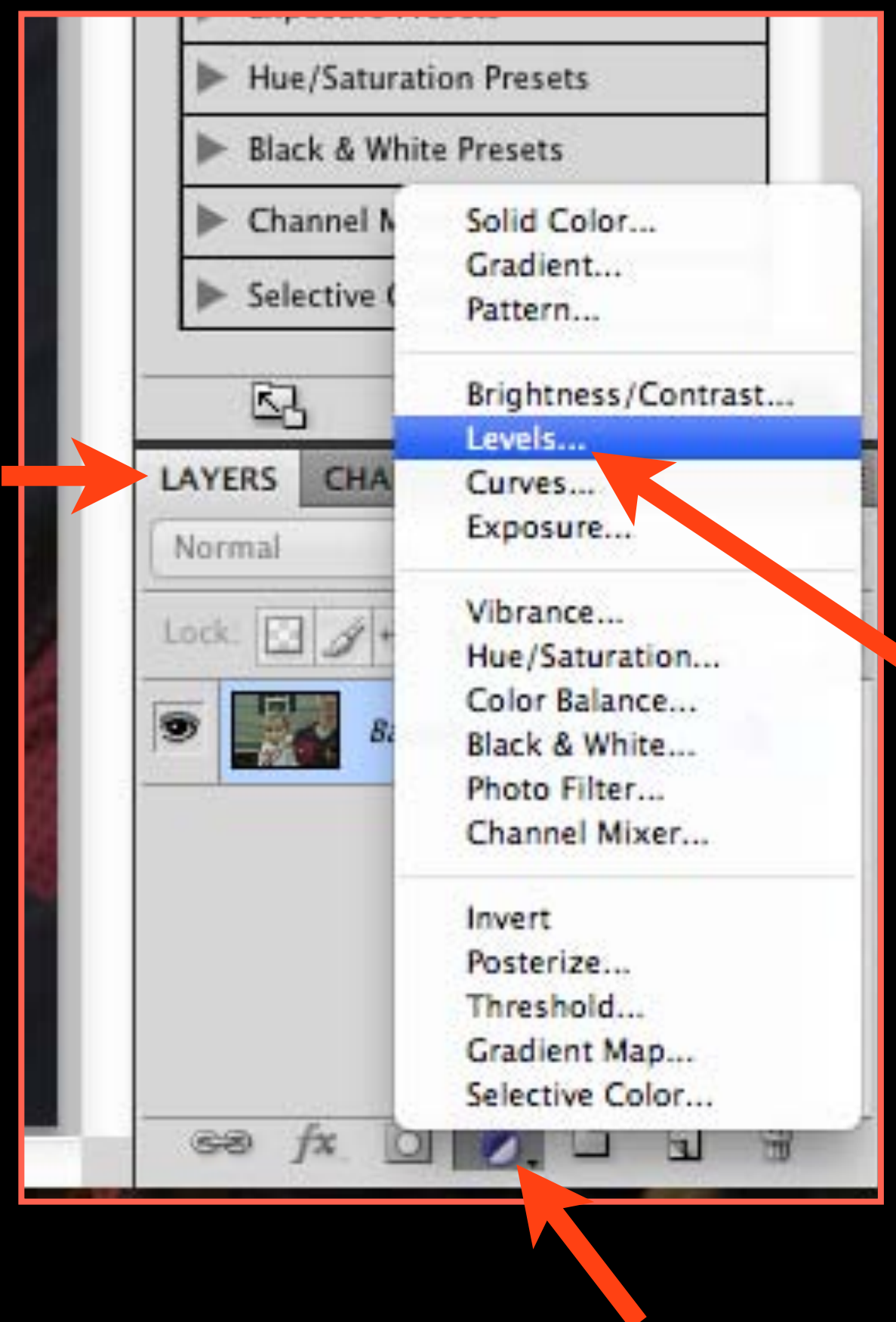


13. Resize image, uncheck Resample Image and change resolution to 300

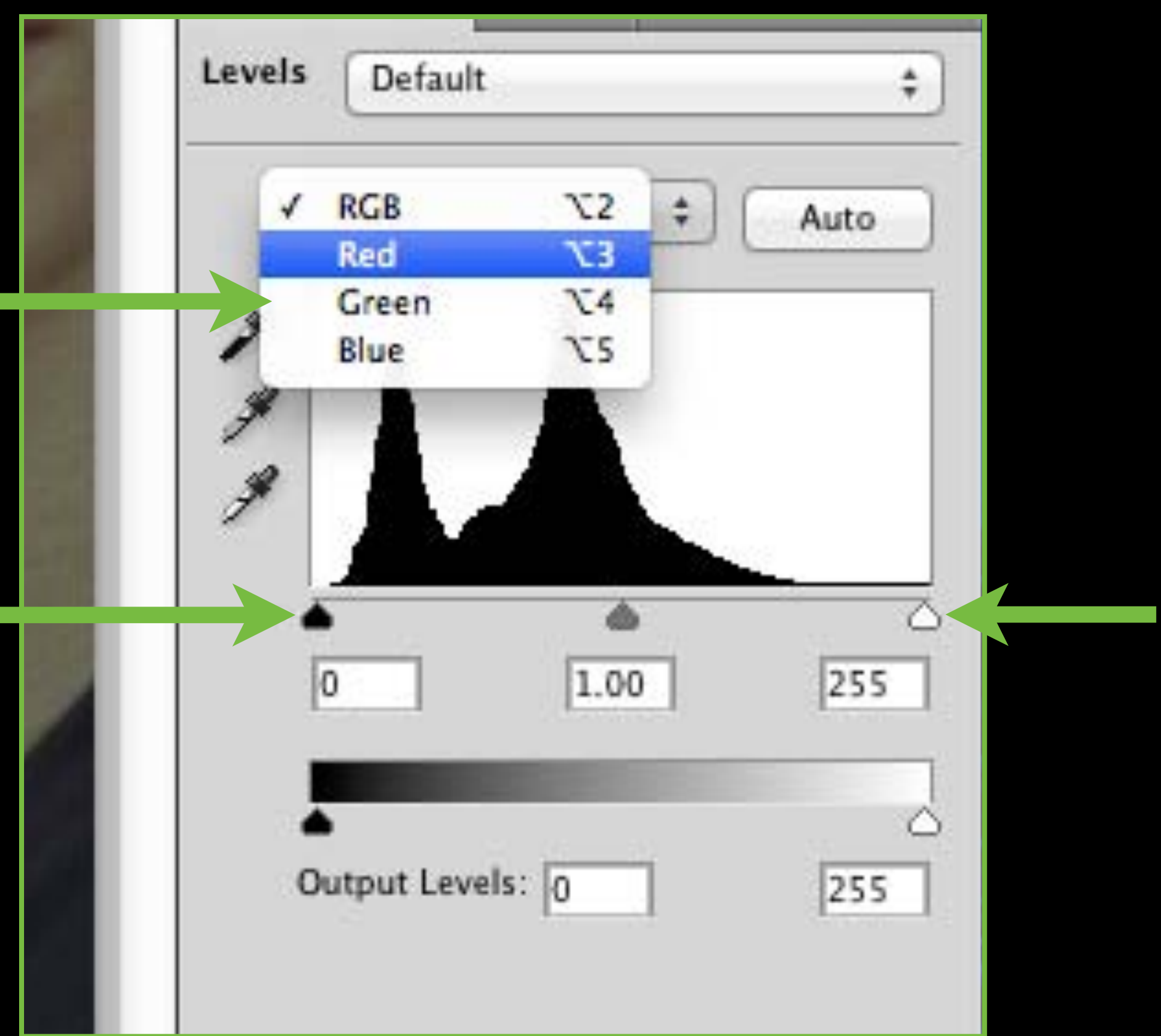


Editing

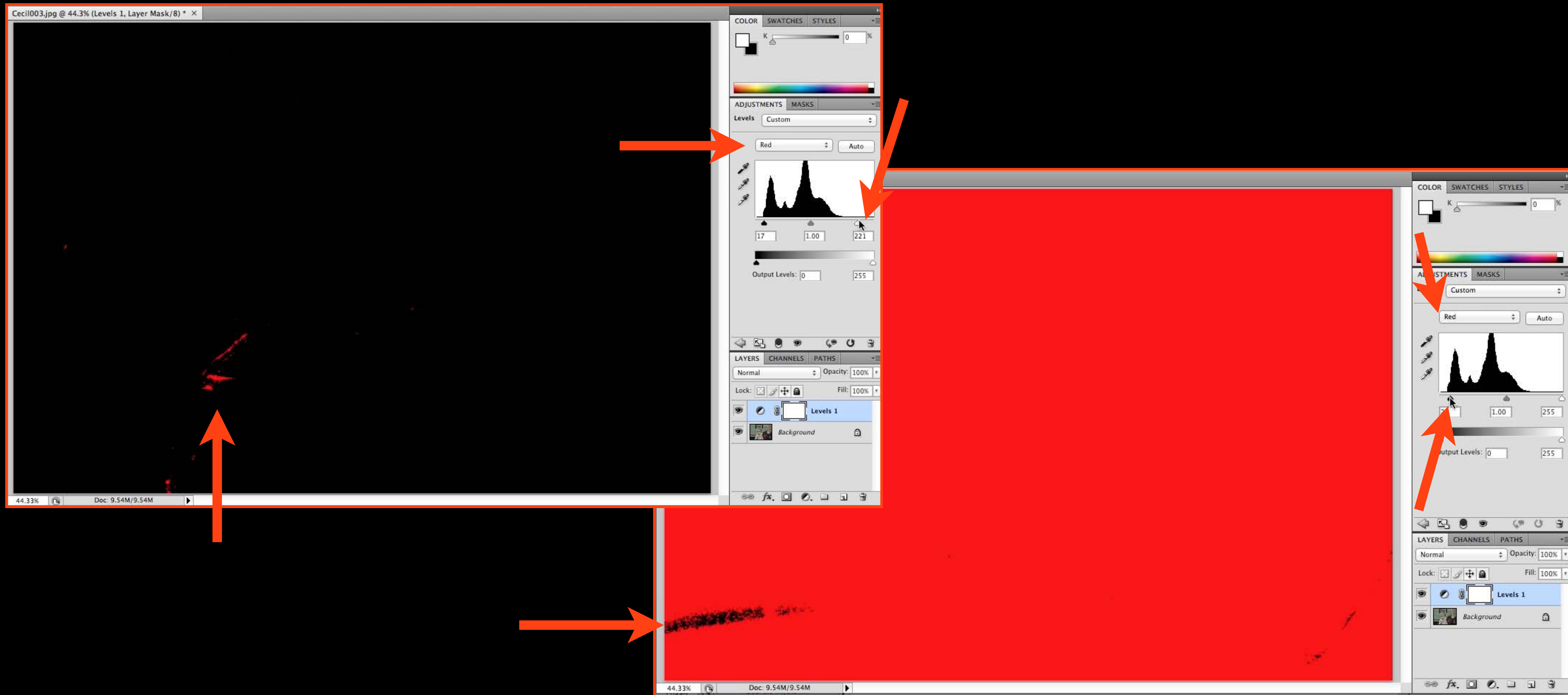
14. Create a Levels Adjustment Layer

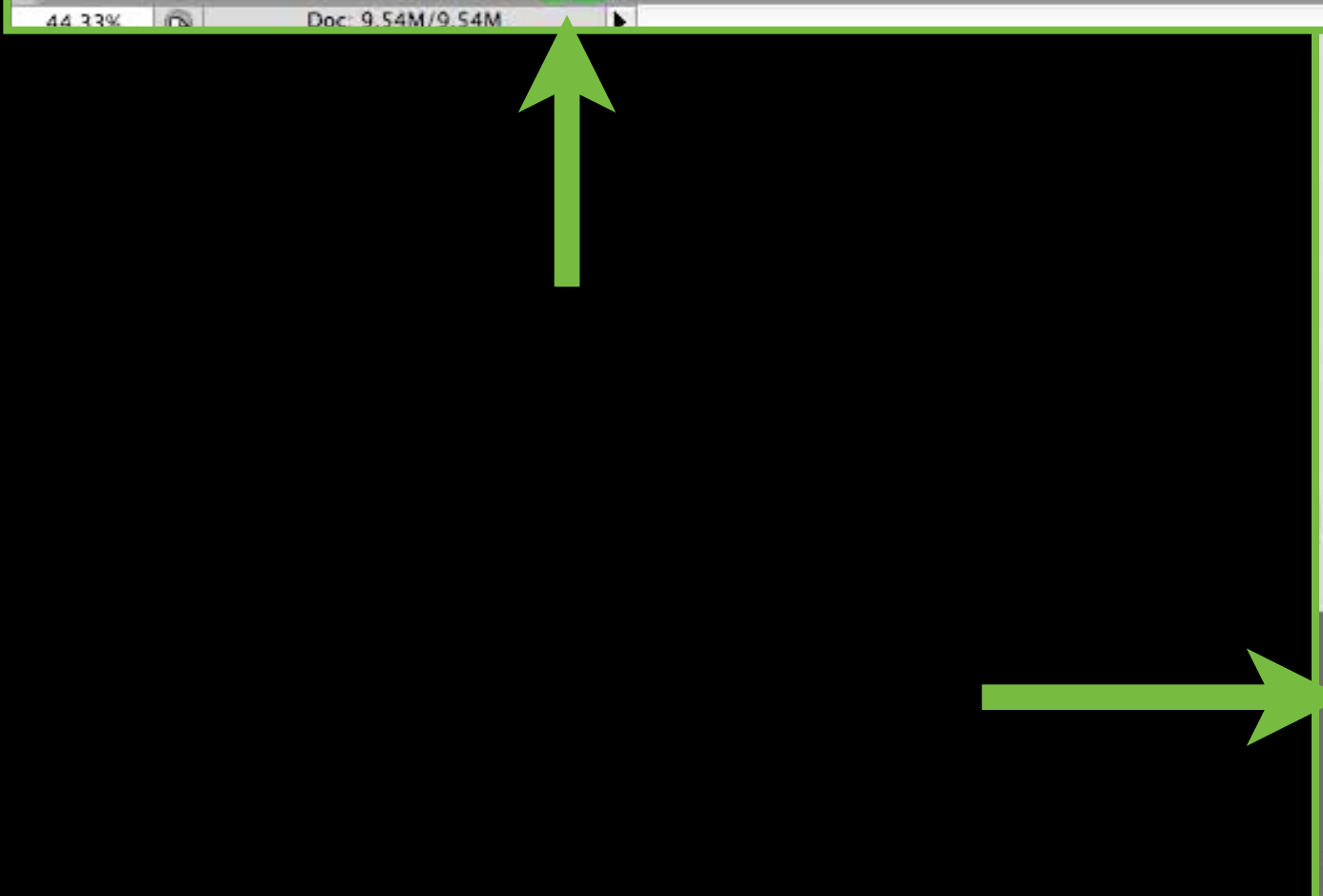
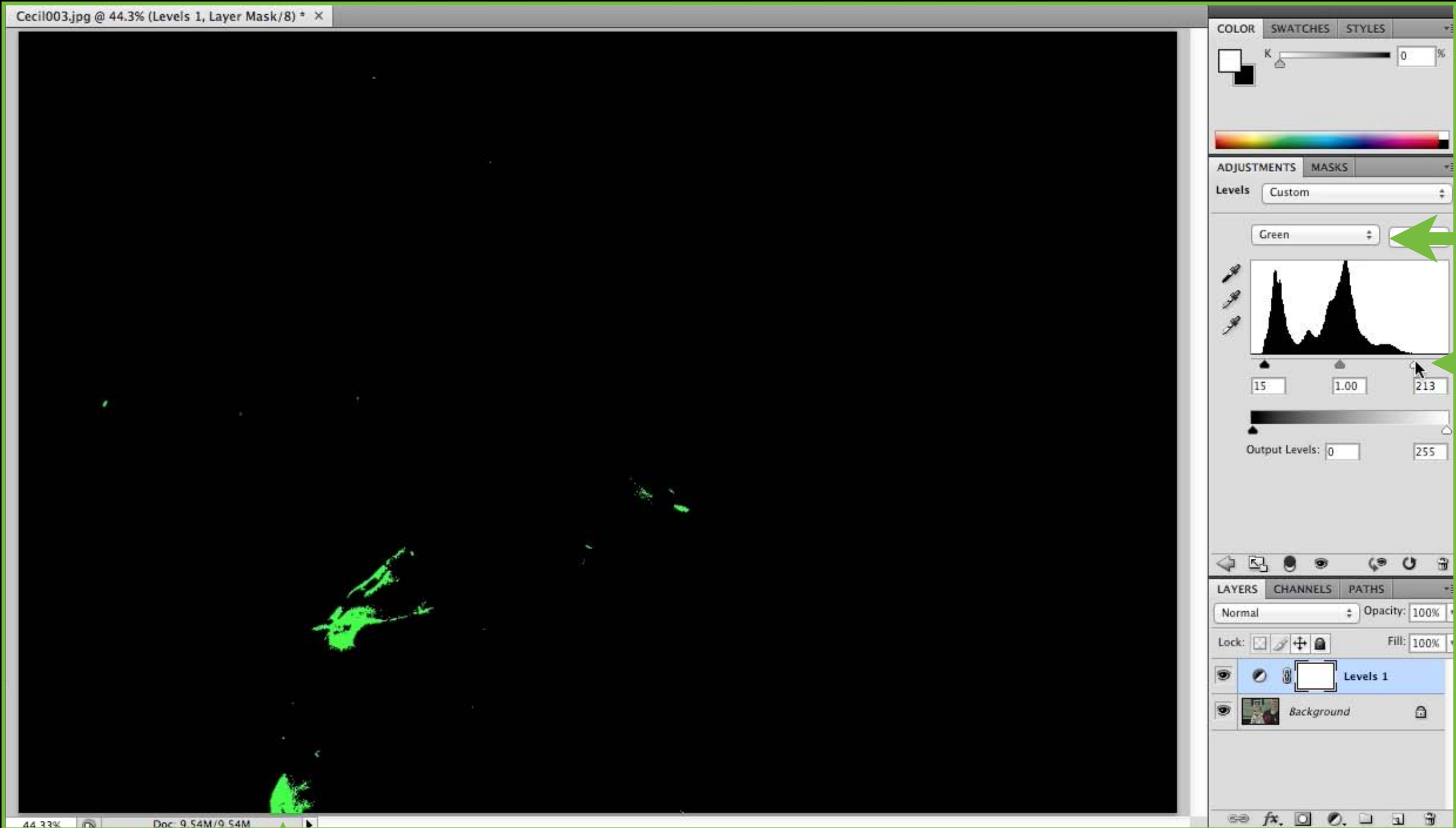


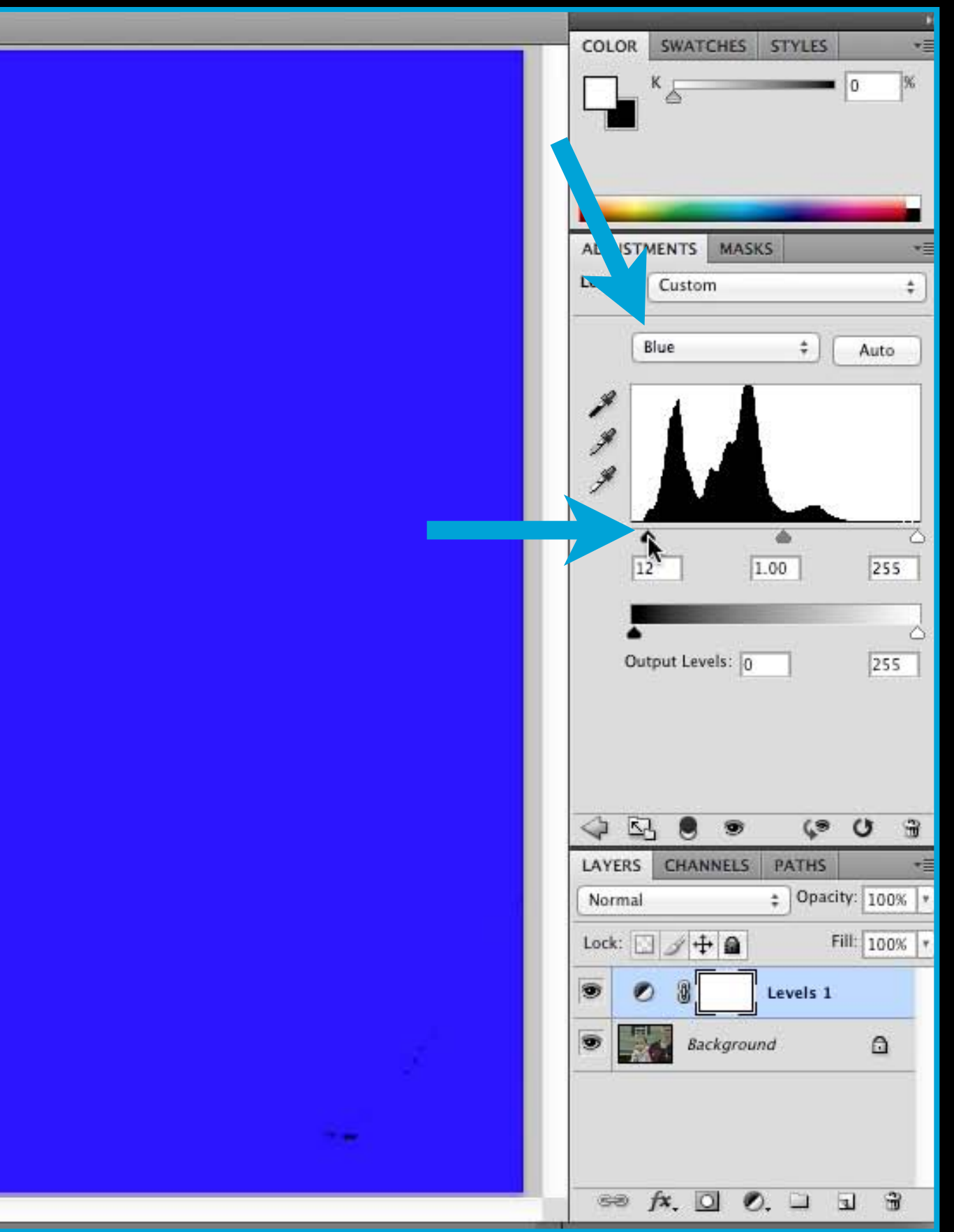
15. Adjust each color's Histogram separately by moving the black and white arrows in, while holding down the Option key. This removes the orange color of the film base and restores true color.



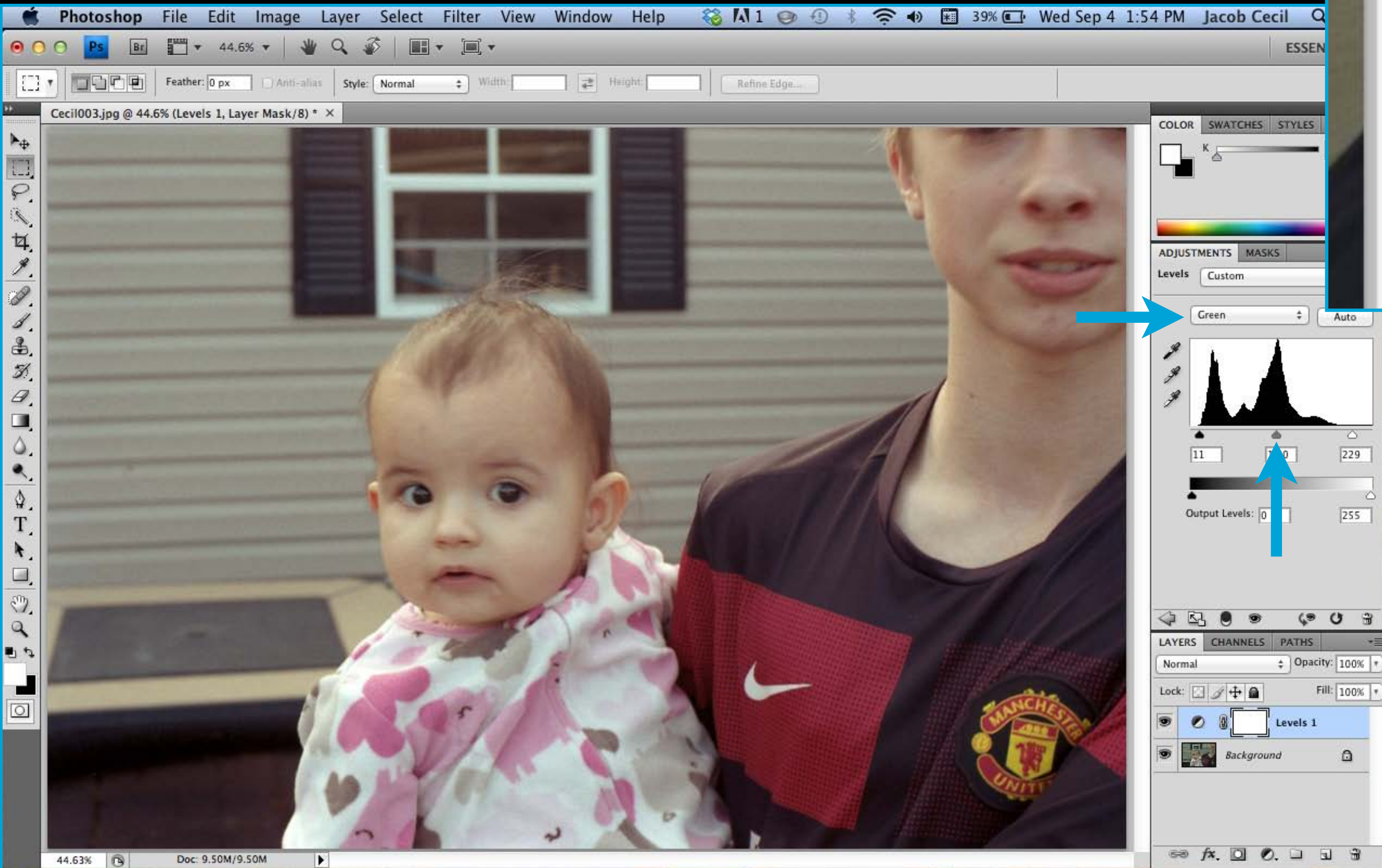
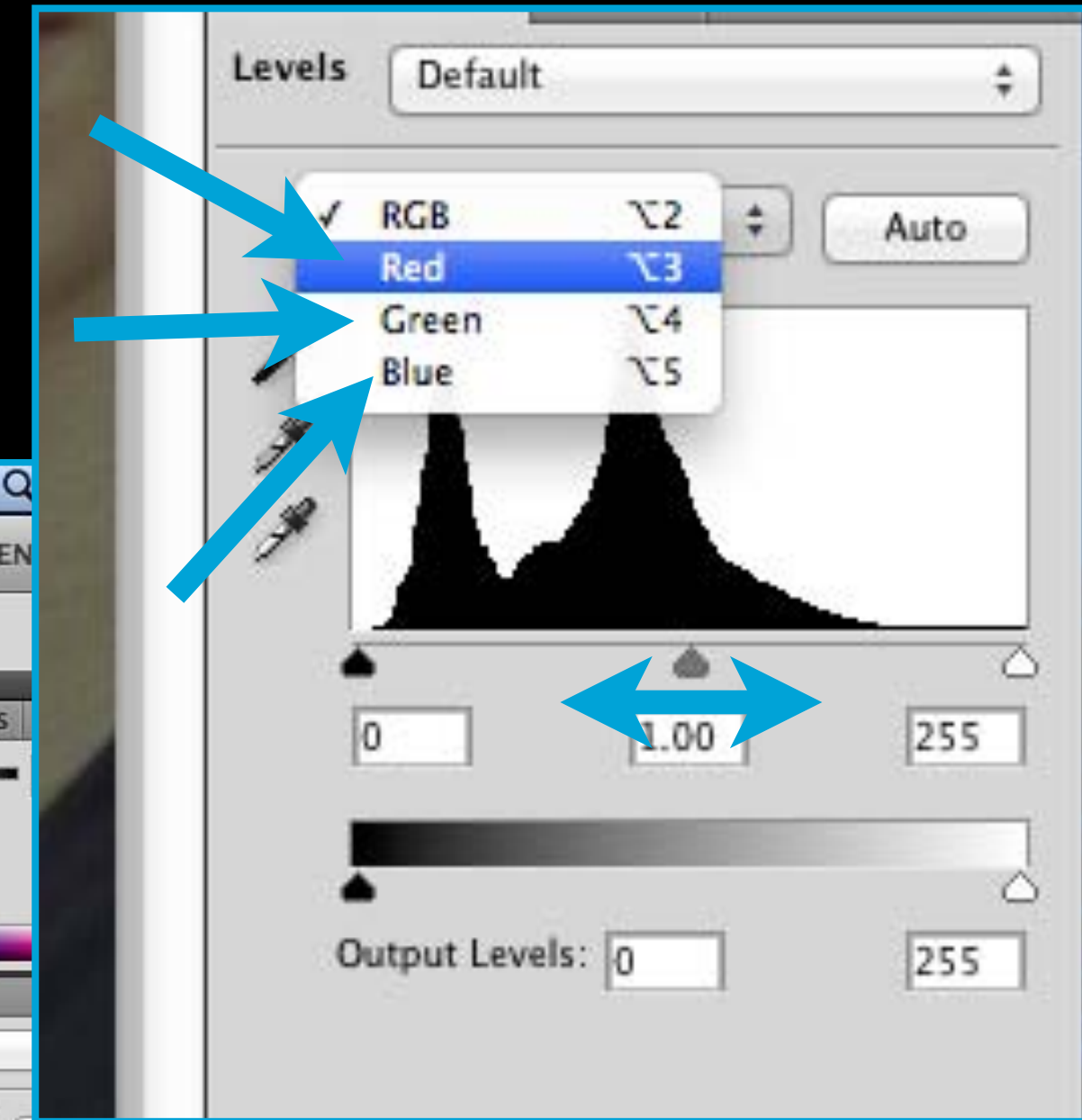
16. Holding down the Option key previews what is changed as you slide the black and white arrows of the Histogram. Once you start to see colored shapes appear in the image part of the frame stop adjusting. Your goal is to get accurate color by removing whatever is unnecessary.



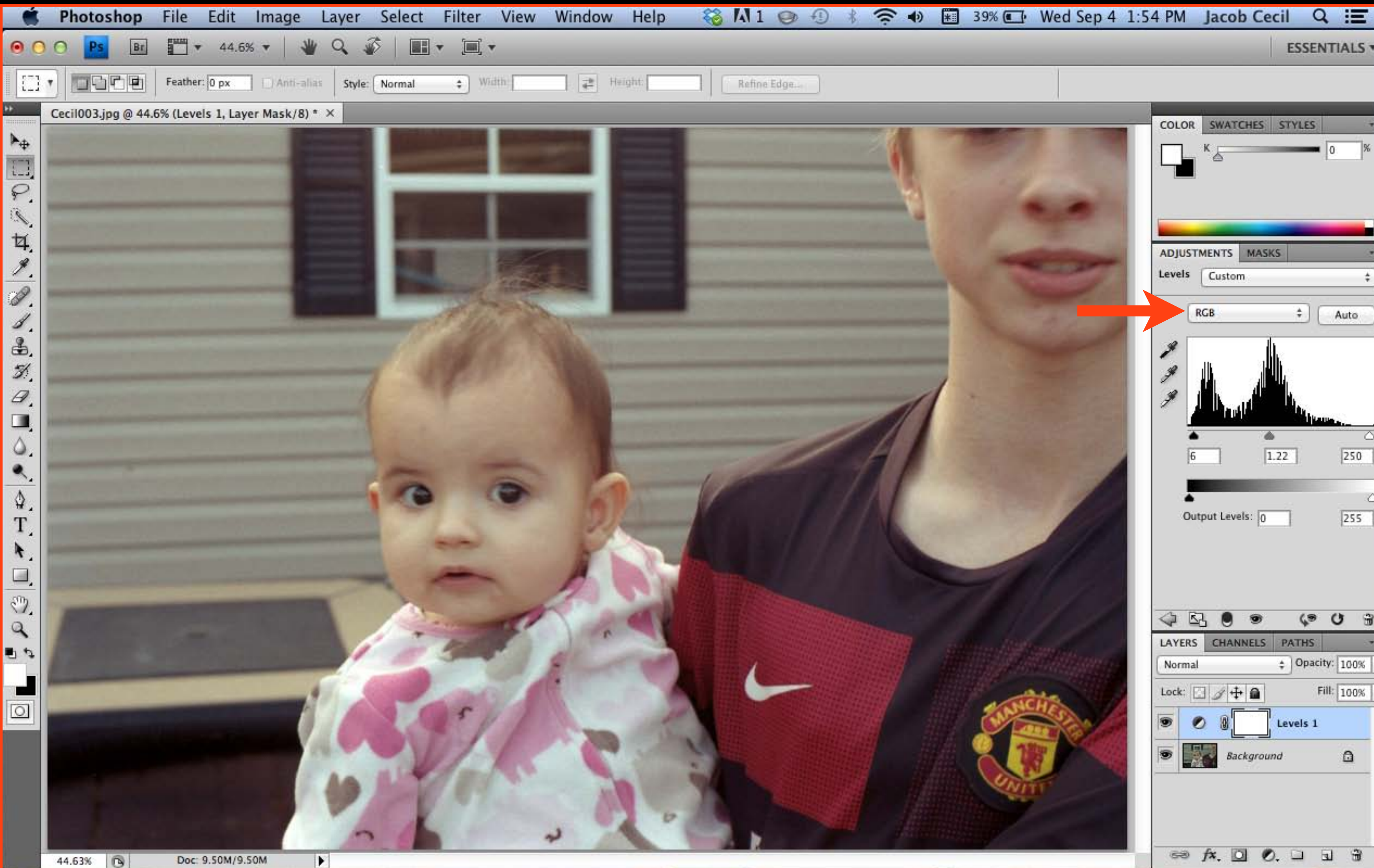
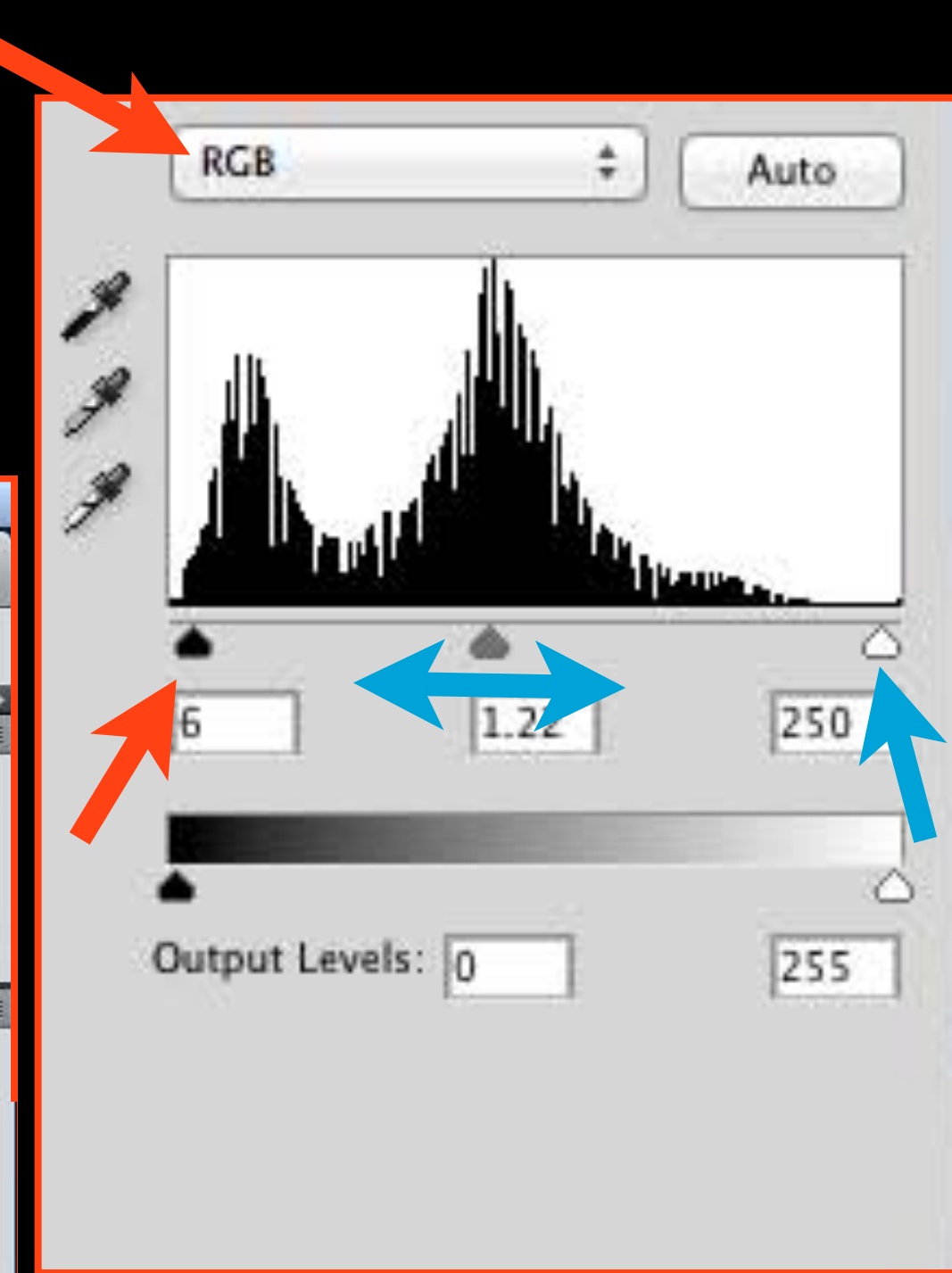




17. To fine tune further and get the most accurate colors, slide the middle gray arrow left or right for each separate color channel. Go slow.



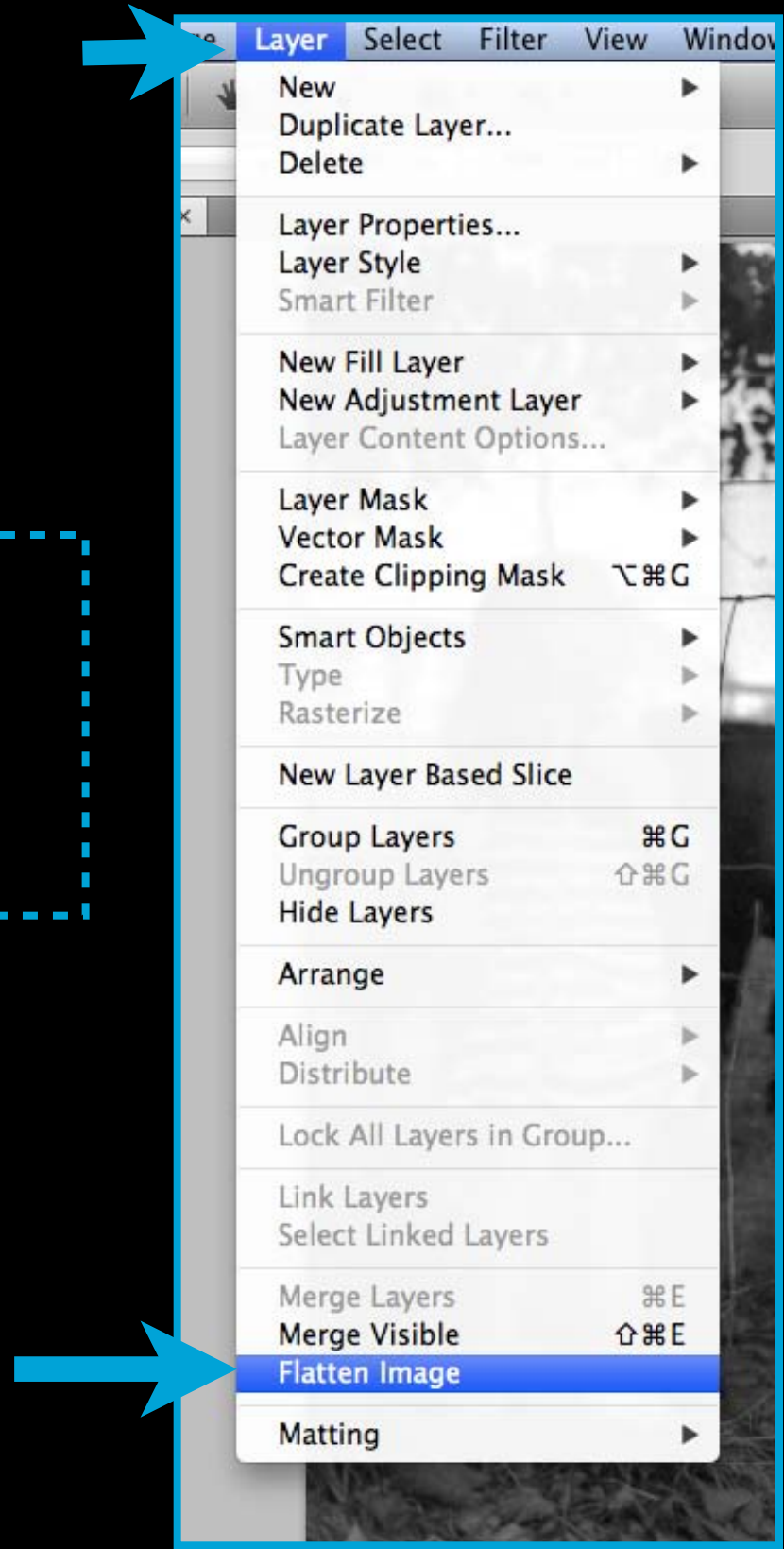
18. To brighten or darken the image as a whole adjust all colors at once by selecting RGB



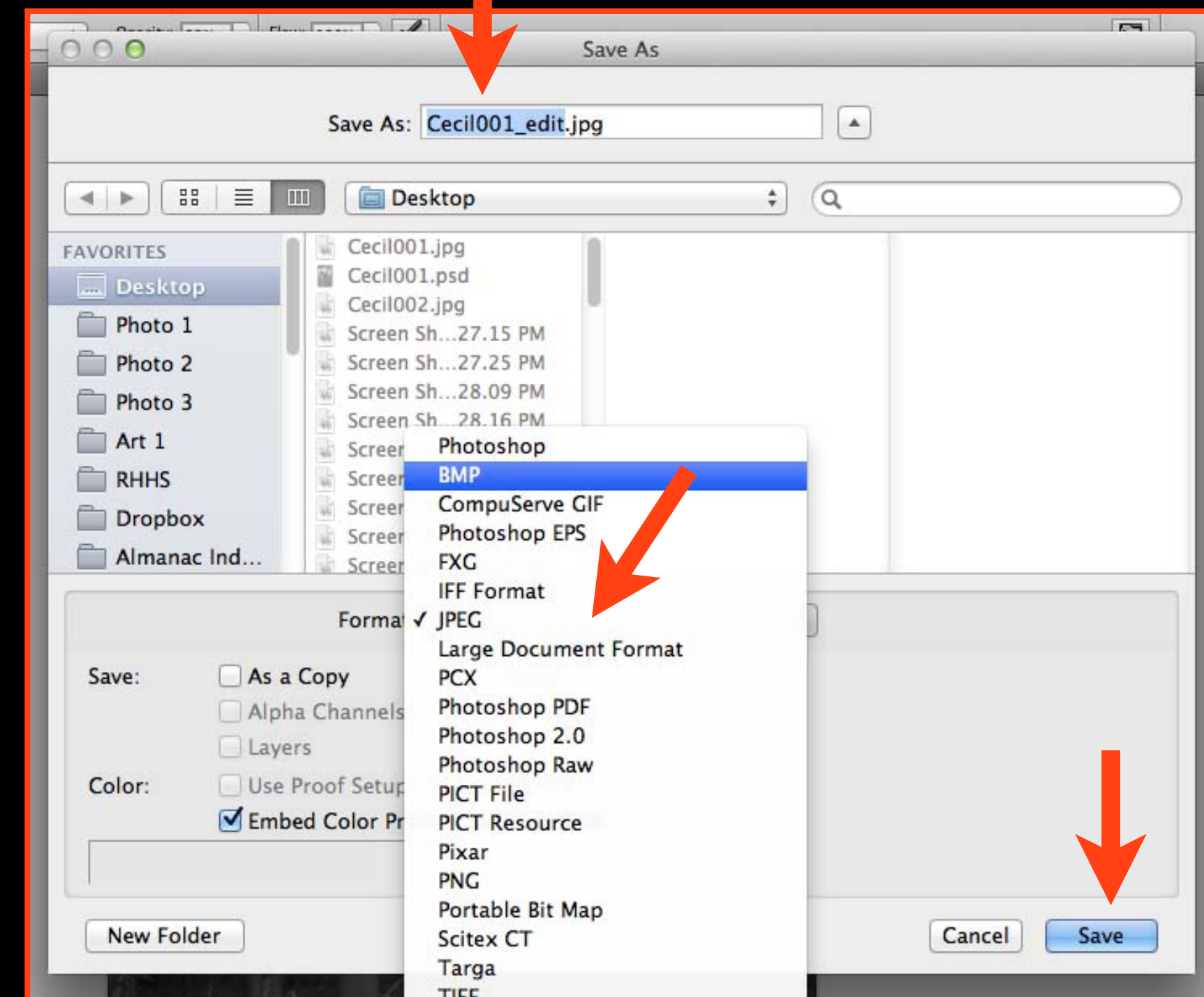
19. Dodge and burn if necessary (see directions under Scanning B&W negatives)

Saving

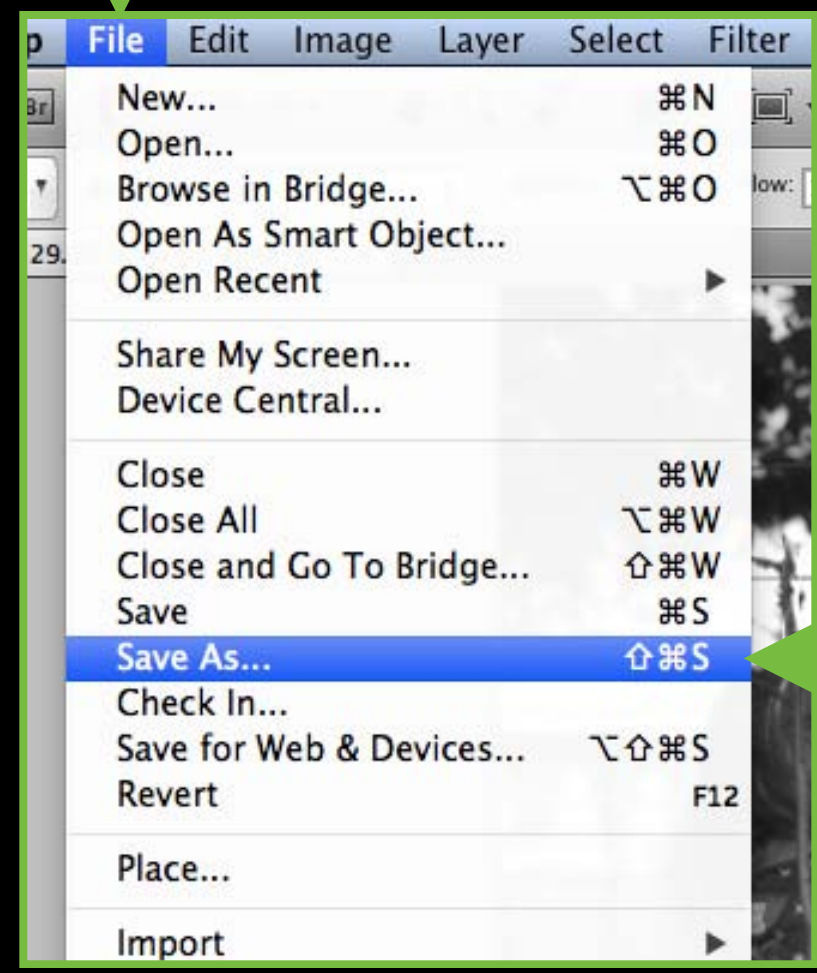
20. Next, Flatten the image



22. Save As, name it as an edit, change Format to JPEG



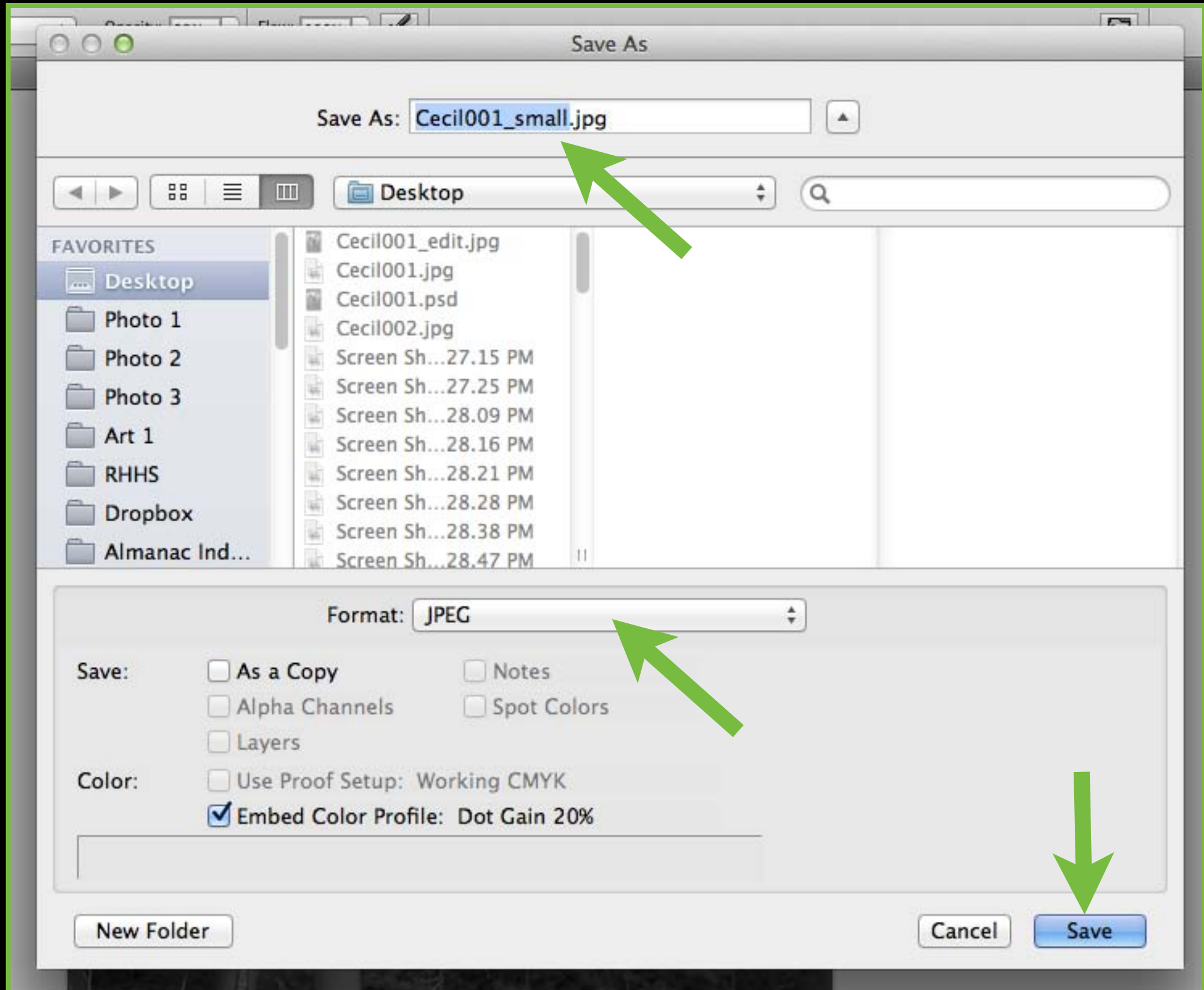
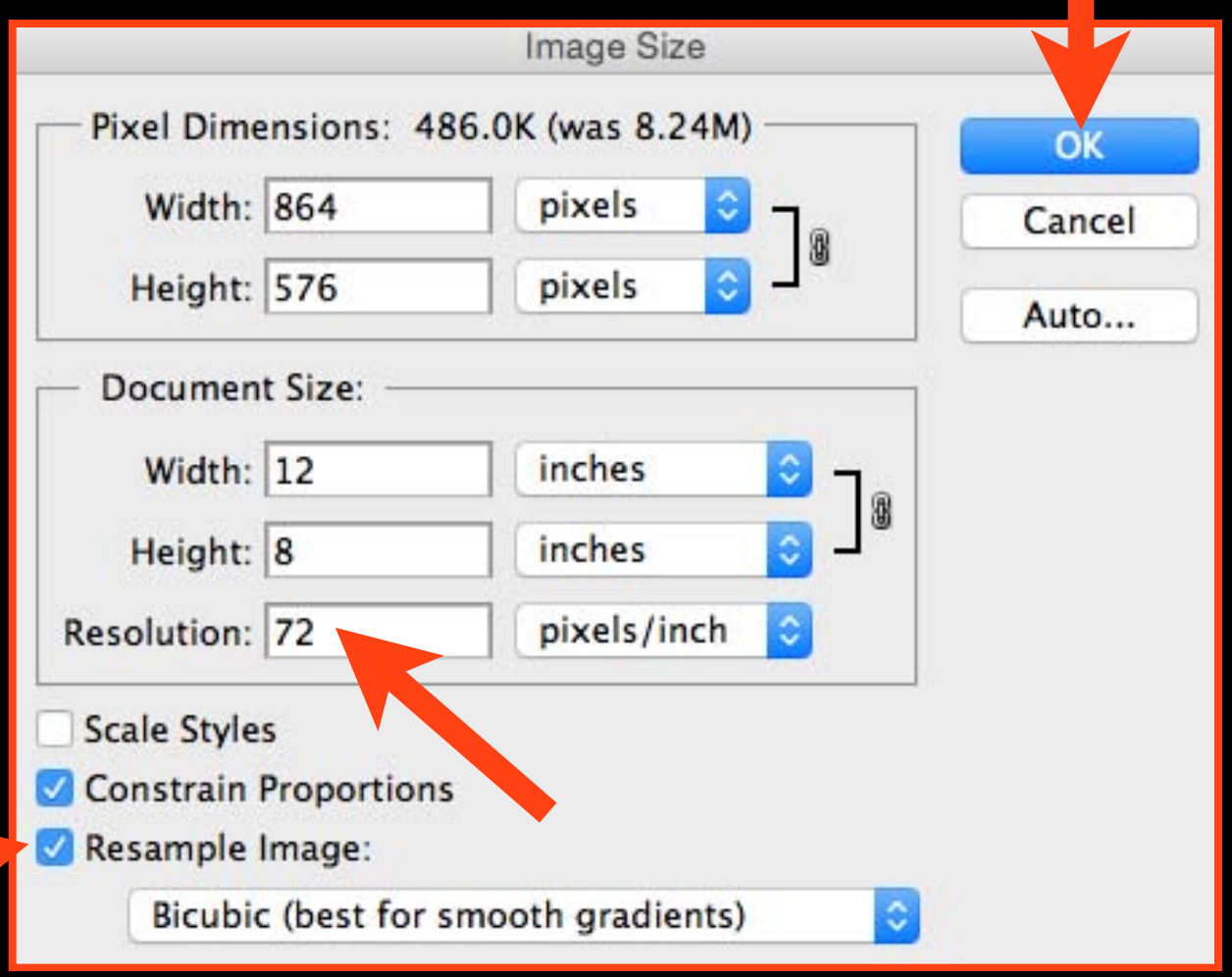
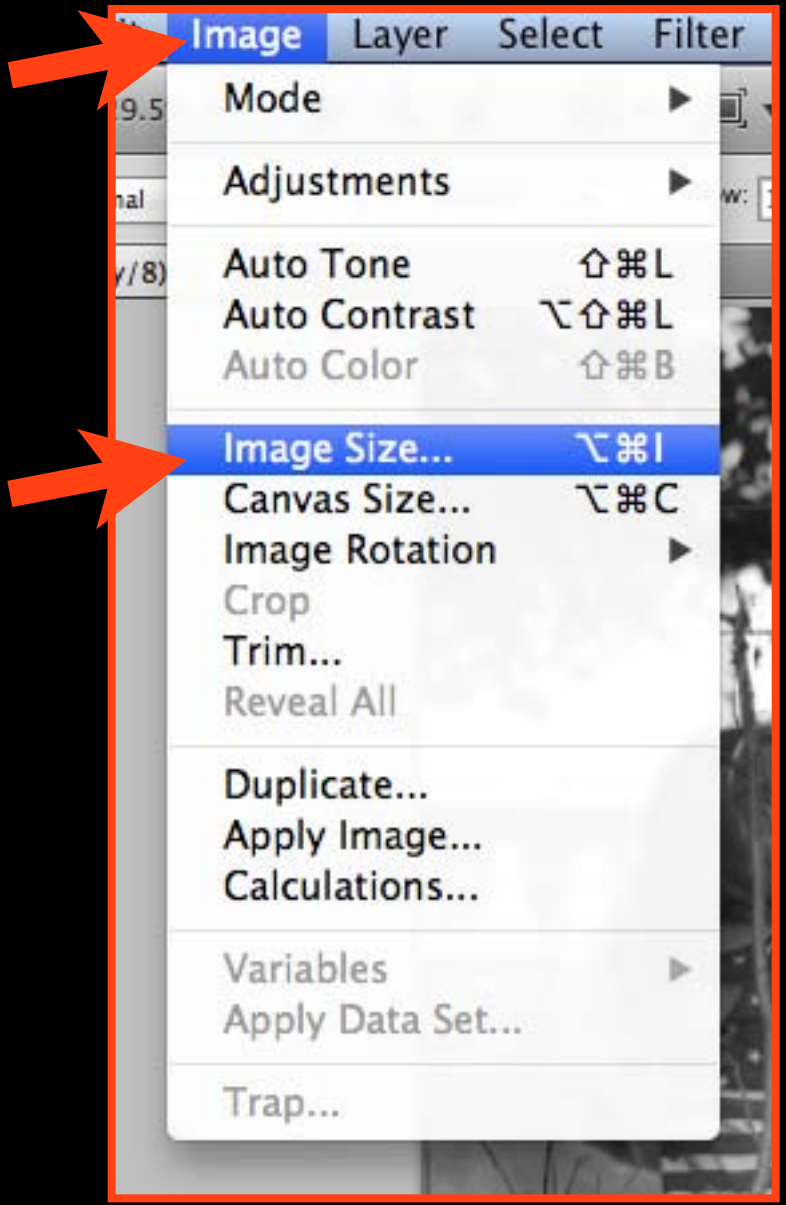
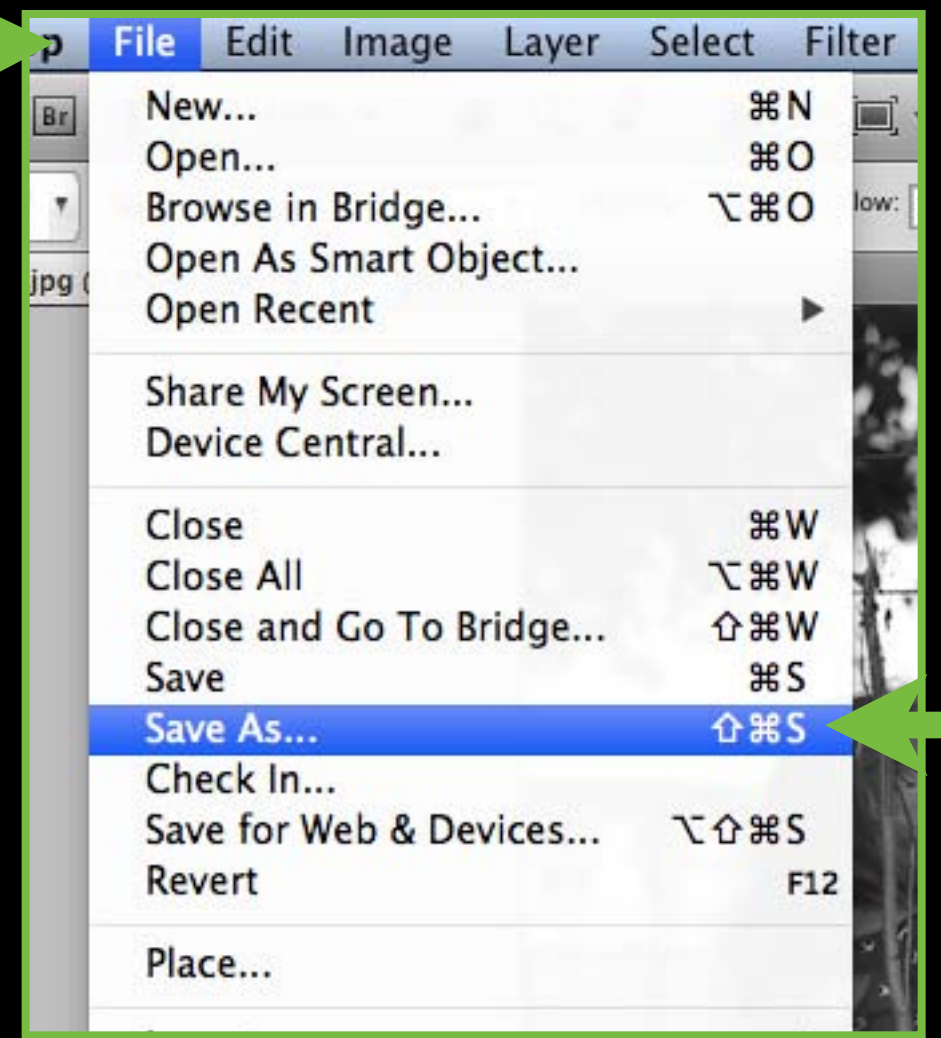
21. Save As



Resizing

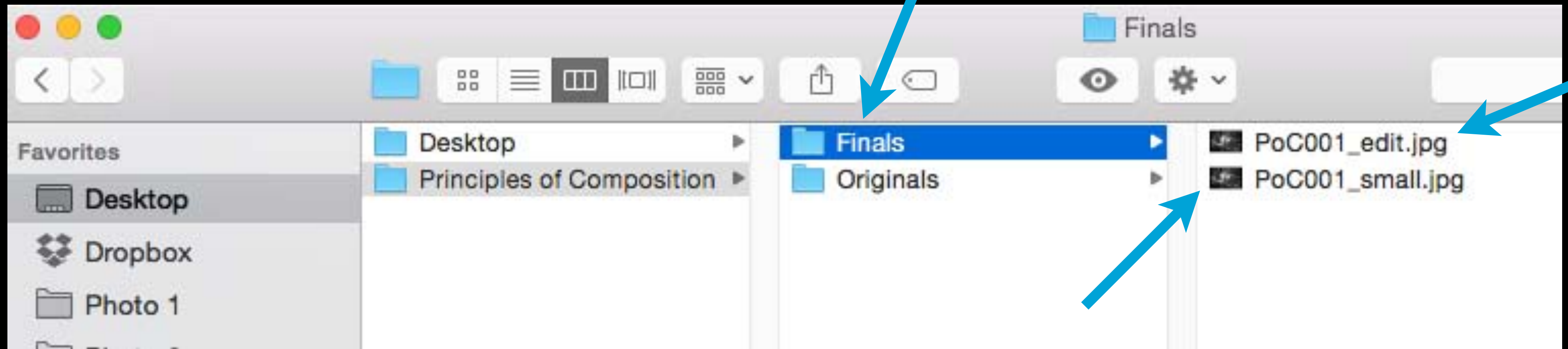
23. Resize for Mahara by checking Resample Image, and change the resolution to 72, with the longest size 12

24. Save As, name it as small, change Format to JPEG



Rename your final files with the name of the assignment

Make an Originals folder and a Finals folder to separate your photos



You now have 2 versions of your scan:

1. Edited file, flattened, and saved as a JPEG at 300 resolution
2. JPEG resized to 72 resolution for Mahara